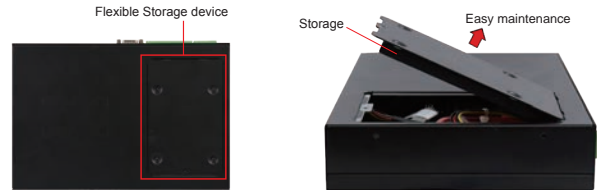




Rear I/O

### Features

- Fanless system with IBASE IB918 3.5" Disk-Size SBC
- AMD Ryzen™ Embedded V1000 /R1000 on board
- 2x DDR4 SO-DIMM, Max. 32GB, supports ECC
- Supports 2x M.2 sockets (E-Key / M-Key, NVMe)
- 12V(-10%) ~ 24V(+10%) DC-in Power Input
- 2x HDMI(2.0a), 2x Intel® Gigabit LAN
- 4 x COM ports, External GPIO
- 4 x USB3.1, 1x USB2.0



### Specifications

System Mainboard	IB918F-1605 /IB918F-1202 /IB918F-1606G / IB918F-1505G
APU Type	AMD Embedded Ryzen™ Series SoC V1605B/ V1202B/ R1606G/ R1505G
Memory	2x 8GB DDR4-2666 SO-DIMM Max.32GB, supports ECC
System Speed	up to 3.6GHz
Construction	Aluminum & steel
Chassis Color	Black
Front Panel External I/O	1x Audio Jack for Line-out/ Line-in/ MIC-in 1x Power LED/ 1x HDD LED/ 1x RST button/ 1x On/Off button 1x USB 3.0/2.0 by V1605B/ V1202B/ R1606G/ R1505G 3x DB9 for COM#2~4 (RS232)
Rear Panel External I/O	4 x USB 3.1 2x HDMI(2.0a) 1x DB9 for COM#1 (RS232/422/485) 2x LAN 1x Digital I/O (4-in/4-out) 1x 3-pin DC-in terminal block for 12V(-10%) ~ 24V(+10%) 2x Antenna holes
Internal Expansion	2x M.2 (E-Key / M-Key)
Storage	1x 2.5" HDD or SSD
Mounting	Desktop or wall mount (wall mount kit included)
Dimensions	240mm (W) x 162mm (D) x 42mm (H) 9.44" (W) x 6.37" (D) x 1.65" (H)
Weight	1.7kg
Operating Temperature	0°C~45°C (32°F~113°F)
Storage Temperature	-20°C ~80°C (-4°F~176°F)
Relative Humidity	5%~90%@45°C (non-condensing)
Vibration	Operating : 3Grms / 5~500Hz
Certification	CE/LVD/FCC Class B

### Ordering Information

ASB200-918-1605	Fanless chassis with IB918F-1605, AMD Ryzen™ Embedded V1605B QC APU 2.0GHz, 4x COM, 2x 8GB DDR4 memory, 1x 2.5" SATAIII 64GB TLC SSD, w/o 90W power adaptor
ASB200-918-1202	Fanless chassis with IB918F-1202, AMD Ryzen™ Embedded V1202B DC APU 2.3GHz, 4x COM, 2x 8GB DDR4 memory, 1x 2.5" SATAIII 64GB TLC SSD, w/o 90W power adaptor
ASB200-918-1606G	Fanless chassis with IB918F-1606G, AMD Ryzen™ Embedded R1606G DC APU 2.6GHz, 4x COM, 2x 8GB DDR4 memory, 1x 2.5" SATAIII 64GB TLC SSD, w/o 90W power adaptor
ASB200-918-1505G	Fanless chassis with IB918F-1505G, AMD Ryzen™ Embedded R1505G DC APU 2.4GHz, 4x COM, 2x 8GB DDR4 memory, 1x 2.5" SATAIII 64GB TLC SSD, w/o 90W power adaptor
90W power adaptor (optional)	90W (24V@3.75) power adaptor, DC-jack or bare wire type, Compatible with IEC62368-1/EN62368-1

## Comparison of ASB Series System Width

7.08-inch (180mm)



ASB200-916

7.08-inch (180mm)



ASB200-919

9.44-inch (240mm)



ASB200-918

## Comparison of ASB Series System Height

1.65-inch (42mm)



ASB200-918

2.6-inch (66mm)



ASB200-919

2.79-inch (71mm)



ASB200-916

## Dimensions and Drawing

