

Marine Monitor Series



19" / 24" IP66 Marine Monitors

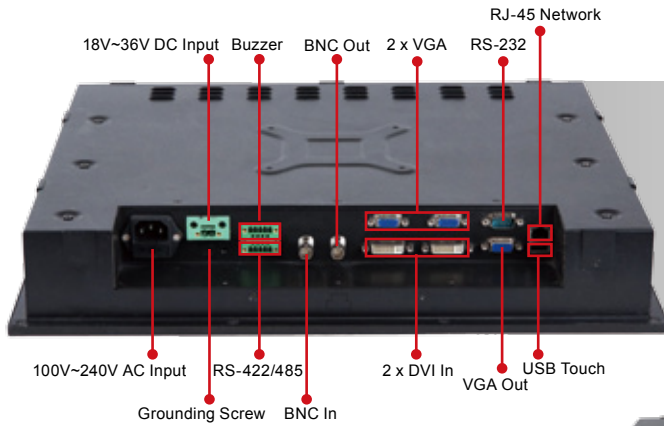
Features

- IP22 Rear / IP66 Front
- -15°C ~ +55°C Wide Temperature and Flat-bezel Projected Capacitive Touchscreen
- Excellent Visual Performance
 - Full OSD function configuration
 - 0%~100% full range dimming
 - 178°/178° wide viewing angles
 - Optical bonding improves visibility under bright light (optional)
- Multiple Video Input
 - two VGA, two DVI, and one BNC
- Multiple Video Output
 - One VGA and one BNC
- Dual Isolated AC/DC Input with Redundant Power Protection
- Remote OSD Settings through LAN, RS-232, RS-422 and RS-485



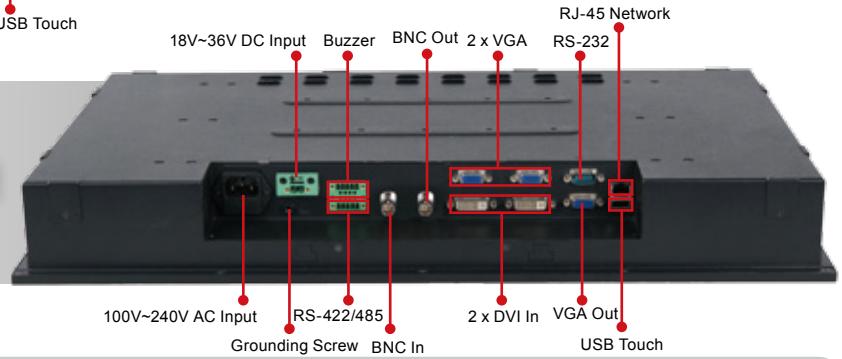
Specifications

Model		S19M	S24M
LCD	LCD Size	19"	24"
	Panel Type	PMVA	AMVA
	Max Resolution	1280 x 1024 (5:4)	1920 x 1080 (16:9)
	Contrast Ratio	2000 : 1	5000 : 1
	Brightness (cd/m ²)	300	300
	LCD Color	16.7M	16.7M
	Pixel Pitch (um)	294 x 294	276 x 276
	Viewing Angles (H-V)	178° / 178°	178° / 178°
	Backlight MTBF (HRs)	50000	50000
Touchscreen & Controller		Projected capacitive touchscreen EXC7900 * 10-points	Projected capacitive touchscreen EETI 2-points
Scalar Chip		STDP8028	
I/O Ports		<ul style="list-style-type: none"> • DVI-D signal input: 2 x DVI (24-pin, female) • RGB signal input: 2 x HD D-SUB (15-pin, female) • Composite video input: 1 x BNC connector (female) • Composite video output: 1 x BNC connector (female) • RS-232/422/485 for remote control non-isolated • RGB signal output: 1 x HD D-SUB (15-pin, female) - Clone of RGB IN* • Touchscreen: 1 x USB type A connector (female) • Ethernet: 1 x RJ-45 connector for remote control • Isolated 100V~240V AC power input • 18-36V DC power input with isolation 	
PIP		Yes	
Light Sensor		Yes	
OSD Button		P-CAP Button (LCD on/off, Menu, Auto, Up, Down, Left ,Right)	
LED/Sensor		Ambient light sensor (0%~100%)	
Optional Function		Optical Bonding	
		ECDIS compliant (IEC 61174)	
Power Requirement		Multi-power Supply: • 110~240VAC ,24 VDC (18VDC~36VDC)	
Operating Temperature		-15°C ~ 55°C	
Storage Temperature		-20°C ~ 60°C	
Humidity		Humidity up to 95%	
Thermal Design		Fanless	
Housing		Aluminum front , sheet metal back (Black C)	
Cut-out Dimensions (L x W)		442 mm x 373 mm	576 mm x 356 mm
Dimensions (L x W x D)		463 mm x 394 mm x 76 mm	592 mm x 374 mm x 74 mm
Mounting		VESA 100mm x 100mm	VESA 200mm x 100mm
Approvals		EMC: CE, FCC	
		Safety: DNV, IEC 60945 4th, IACS-E10	
		IP Rating: IP66 front , IP22 rear	

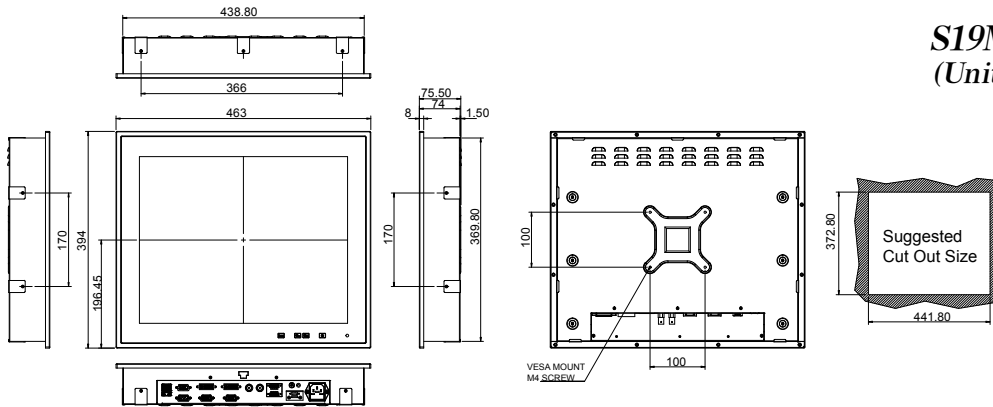


S19M

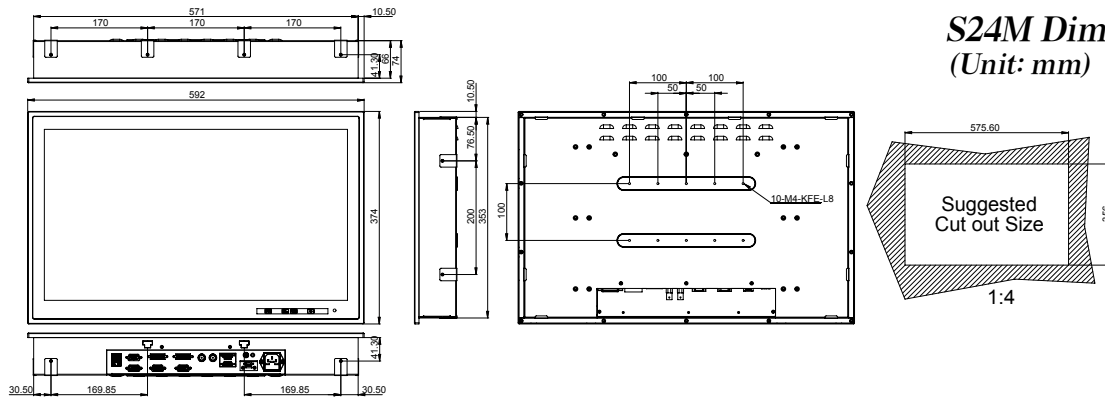
S24M



S19M Dimensions
(Unit: mm)



S24M Dimensions
(Unit: mm)



Ordering Information

PN	Description
S19M/PC-R10	19" 300 cd/m ² SXGA LCD monitor, aluminum front panel, black color, W/ USB projected capacitive touch screen, 18 ~36V DC input, R10
S24M/PC-R10	24" 300 cd/m ² FHD LCD monitor, aluminum front panel, black color, W/ USB projected capacitive touch screen, 18 ~36V DC input, R10

Options

Item	S19M	S24M
Panel Mount Kit	PK-S19M-R10	PK-S24M-R10
Desktop Stand	STAND-S24M-R10	STAND-S24M-R10

Packing List

Item	Q'ty	Description
Utility CD	1	Drivers and user manual