

NPD1268

12.1" IP65 Sunlight Readable Multi-Touch Marine Display

NAVPIXEL NPD1268, the high-performance, rugged touch monitor, is specially engineered to survive from the most demanding working environment. Housed in a milled billet aluminum case, the slim-profile NAVPIXEL NPD1268 is light weight and watertight. The front-mounted sunlight readable touch screen makes the industrial rugged monitor vividly and user-friendly. In addition, the high power efficiency and low heat design guarantee the stability and longevity required for mission critical deployment.

Features:

- 1600 nits Sunlight Readable LCD
- Long Life, Low Power Consumption LED Backlight
- Wide Operating Temperature
- Advanced Optical Bonding (AOT)
- High Shock & Vibration Resistance
- Projected Capacitive Multi-Touch Support
- IP65 Facial Waterproof
- Isolation Power 9-36V DC Input

Application:

- Marine



Specifications

V1

Model Number	NPD1268
Description	12.1" IP65 Sunlight Readable Multi-Touch Marine Display
Backlight	LED Backlight
Active Display Area	245.76 x 184.32mm
Brightness	1600 cd/m ²
Resolution	1024x768(XGA)
Contrast Ratio	700:1
Pixel Pitch (mm)	0.24(H) x 0.24 (V)
Viewing Angle	160 (H), 160(V)
Display Color	262k
Response Time	35
Inputs	VGAX1, DVIx1, Compositex3, RS232x1, USBx1
PIP Support	NA
Mechanical	
IP Rating	Facial waterproof to IP65 standards when console mounted.
Construction	Rugged Aluminum Alloy Chassis
Mounting	Panel (Flush) mount, VESA mount
Dimension (mm)	316(W)x272.3(H)x56(D)
Net Weight	2.5Kg
Power	
Voltage	DC Input Voltage: DC 9~36V
Power Consumption	14W
Environmental	
Operating Temperature	-20°C~60°C
Non-Operating Temperature	-20°C~70°C
Certification	Designed to meet CE / FCC Class A
Marine Type Approval	Designed to meet CE/FCC & BV Marine Approval Pending

Specifications are subject to change without notice.

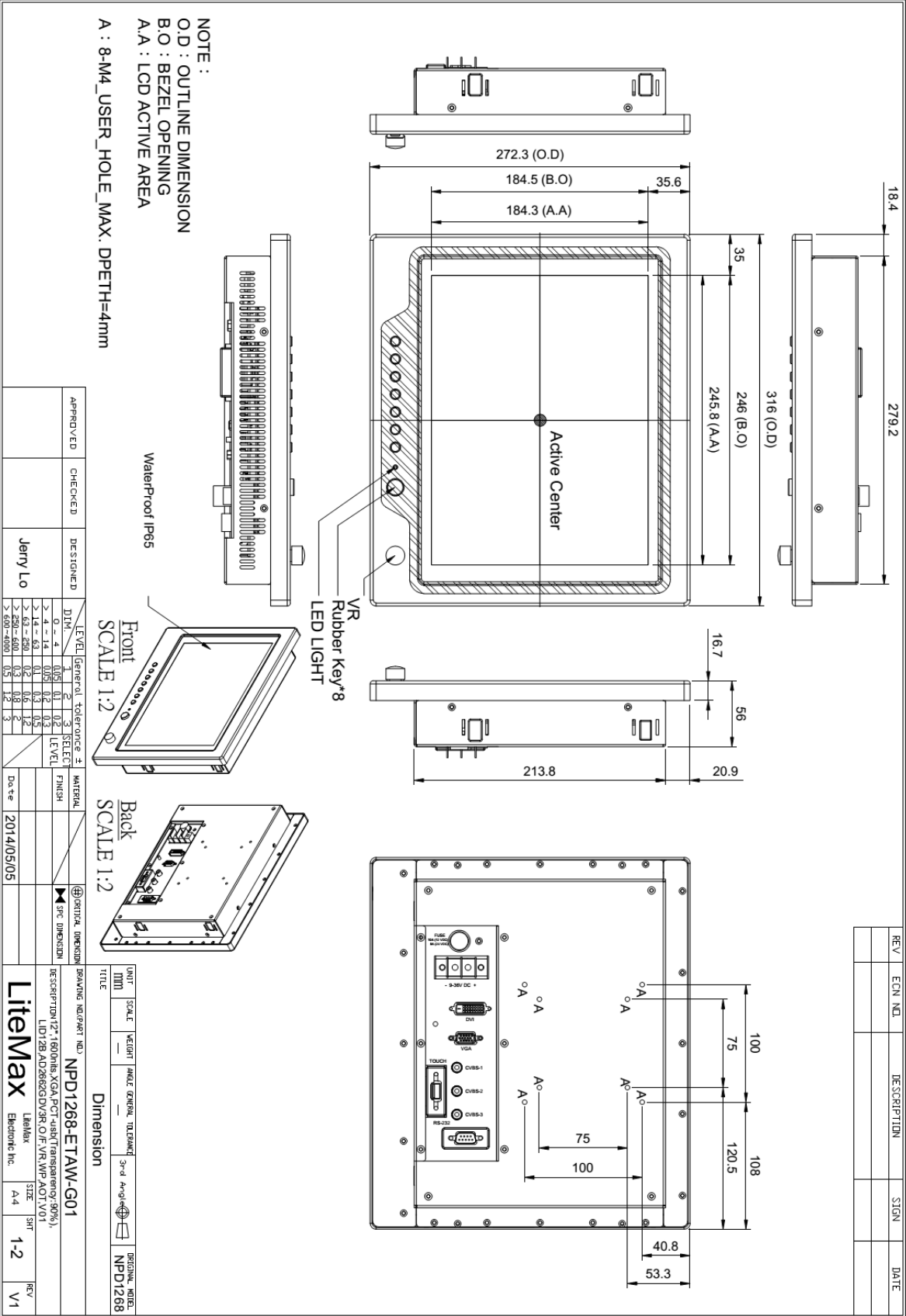
All brands or product names are trademarks or registered trademarks of their respective companies.



Mechanical Drawing

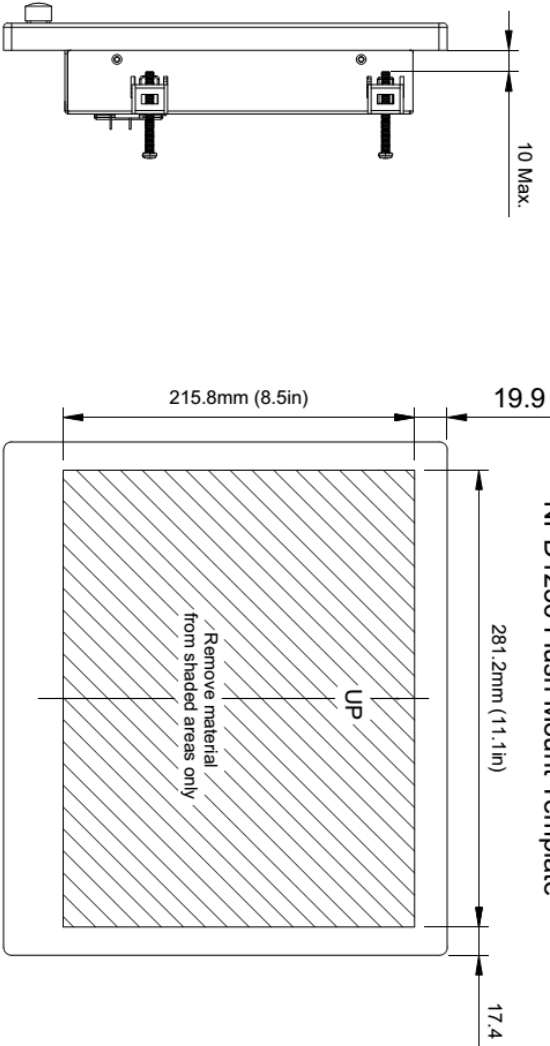
Outline Dimensions

Unit:mm





REV	ECN NO.	DESCRIPTION	SIGN	DATE



Side View

Back View

APPROVED	CHECKED	DESIGNED	Jerry Lo																																			
<table border="1"> <thead> <tr> <th>LEVEL</th> <th>General Tolerance ±</th> <th>SELECT LEVEL</th> <th>MATERIAL FINISH</th> <th>DATE</th> </tr> </thead> <tbody> <tr> <td>1</td> <td>0 - 4</td> <td>0.05</td> <td>0.1</td> <td>0.2</td> </tr> <tr> <td>2</td> <td>> 4 - 14</td> <td>0.05</td> <td>0.2</td> <td>0.3</td> </tr> <tr> <td>3</td> <td>> 14 - 63</td> <td>0.1</td> <td>0.3</td> <td>0.5</td> </tr> <tr> <td>4</td> <td>> 63 - 250</td> <td>0.2</td> <td>0.6</td> <td>1.2</td> </tr> <tr> <td>5</td> <td>> 250 - 600</td> <td>0.3</td> <td>0.8</td> <td>2</td> </tr> <tr> <td>6</td> <td>> 600 - 1000</td> <td>0.5</td> <td>1.2</td> <td>3</td> </tr> </tbody> </table>				LEVEL	General Tolerance ±	SELECT LEVEL	MATERIAL FINISH	DATE	1	0 - 4	0.05	0.1	0.2	2	> 4 - 14	0.05	0.2	0.3	3	> 14 - 63	0.1	0.3	0.5	4	> 63 - 250	0.2	0.6	1.2	5	> 250 - 600	0.3	0.8	2	6	> 600 - 1000	0.5	1.2	3
LEVEL	General Tolerance ±	SELECT LEVEL	MATERIAL FINISH	DATE																																		
1	0 - 4	0.05	0.1	0.2																																		
2	> 4 - 14	0.05	0.2	0.3																																		
3	> 14 - 63	0.1	0.3	0.5																																		
4	> 63 - 250	0.2	0.6	1.2																																		
5	> 250 - 600	0.3	0.8	2																																		
6	> 600 - 1000	0.5	1.2	3																																		
<table border="1"> <thead> <tr> <th>UNIT</th> <th>SCALE</th> <th>WEIGHT</th> <th>ANGLE</th> <th>GENERAL TOLERANCE</th> <th>3rd Angle</th> <th>DECIMAL MODEL</th> </tr> </thead> <tbody> <tr> <td>mm</td> <td>1:1</td> <td>—</td> <td>—</td> <td>—</td> <td>☑</td> <td>NPD1268</td> </tr> </tbody> </table>				UNIT	SCALE	WEIGHT	ANGLE	GENERAL TOLERANCE	3rd Angle	DECIMAL MODEL	mm	1:1	—	—	—	☑	NPD1268																					
UNIT	SCALE	WEIGHT	ANGLE	GENERAL TOLERANCE	3rd Angle	DECIMAL MODEL																																
mm	1:1	—	—	—	☑	NPD1268																																
<table border="1"> <thead> <tr> <th>TITLE</th> <th>DRAWING NUMBER</th> <th>REV</th> </tr> </thead> <tbody> <tr> <td>Dimension</td> <td>NPD1268-ETAW-G01</td> <td>V1</td> </tr> </tbody> </table>				TITLE	DRAWING NUMBER	REV	Dimension	NPD1268-ETAW-G01	V1																													
TITLE	DRAWING NUMBER	REV																																				
Dimension	NPD1268-ETAW-G01	V1																																				
DESCRIPTION: 12" 1600nbs XGA PCT. nbs(Transparency:90%), LID12B AD2662GDV3K.O/F/VK.NP.ADT.V1 LiteMax LabelMax SIZE: A-4 SHT: 2-2 REV: V1 Electronic Inc.																																						



Ordering Information

Part Number	Description
NPD1268-ETAW-G01	12",1600nits,XGA,PCT-usb(T=90%),LID12B,AD2662GDV3R,O/F,VR,WP,AOT,V1

Optional Accessories

Part Number	Description
980000300010	SET,OTHER,CD for User. Menu & Touch driver(NPD series)
810650005110	CABLE,POWER,DC,5000mm,TER.MINAL TO OPEN,14AWG*2C+BRA.ID,COOL GRAY 7C PVC JACKET,P
810130001000	CABLE.VGA.3000mm.D-SUB15P MALE.BLUE TO D-SUB 15P MALE BLUE.BLACK.P
321189155501	Print,Menu,User,NPD.1555,V0,series,P
321179123601	Print,Menu,Install,NPD,1236.V0,Flush mount template,P
112615315401 x (4)	Metal,SPCC,NPS,1531,Lock,V0,P
214032121101 x (4)	Screw,M4,32mm,Round,Ni,P
460100002101 x (4)	Fixture,other,MP-4,V0,P
980000560010 (Optional)	SET,OTHER,ADAPTER REWORK.60W KPA-060F WITH Y TYPE.TERMINAL,P
810618301010 (Optional)	CABLE.POWER.AC.1830mm USA type
810618301090 (Optional)	CABLE,POWER,AC,1830mm Europe type
810618301050 (Optional)	CABLE.POWER.AC.1830mm UK type
810618301170 (Optional)	CABLE.POWER,AC,1830mm Australia type
810618301030 (Optional)	CABLE.POWER.AC.1830mm Japan type