



NPD1954 19" IP65 Sunlight Readable Marine Display

NAVPIXEL NPD1954, the high-performance, rugged touch monitor, is specially engineered to survive from the most demanding working environment. Housed in a milled billet aluminum case, the slim-profile NAVPIXEL NPD1954 is light weight and watertight. The front-mounted sunlight readable touch screen makes the industrial rugged monitor vividly and user-friendly. In addition, the high power efficiency and low heat design guarantee the stability and longevity required for mission critical deployment.

Features:

- 1000 nits Sunlight Readable LCD
- Long Life, Low Power Consumption LED Backlight
- Wide Operating Temperature
- Picture In Picture Function
- Advanced Optical Bonding (AOT)
- High Shock & Vibration Resistance
- Resistive Touch Support
- IP65 Facial Waterproof
- 9-36V DC Input

Application:

- Marine



Specifications

V1

Model Number	NPD1954
Description	19" IP65 Sunlight Readable Marine Display
Backlight	LED Backlight
Active Display Area	376.32 x 301.06m
Brightness	1000 cd/m ²
Resolution	1280x1024(SXGA)
Contrast Ratio	1000:1
Pixel Pitch (mm)	0.294(H) x 0.294 (V)
Viewing Angle	170 (H), 160(V)
Display Color	16.7M
Response Time	5ms
Inputs	VGAx2, DVIx2, Compositex3, RS232x1, USBx1
PIP Support	3 Stages (child, split & wide screen)
Mechanical	
IP Rating	Facial waterproof to IP65 standards when console mounted.
Construction	Rugged Aluminum Alloy Chassis
Mounting	Panel (Flush) mount, VESA mount
Dimension (mm)	421.9(W)x375.5(H)x56.8(D)
Net Weight	5.5kg
Power	
Voltage	DC Input Voltage: DC 9~36V
Power Consumption	55W
Environmental	
Operating Temperature	-10°C~50°C
Non-Operating Temperature	-20°C~70°C
Certification	
CE / FCC	CE / FCC
Marine Type Approval	
BV Rule IACES-E10 certification, comply with IEC 60945	

Specifications are subject to change without notice.

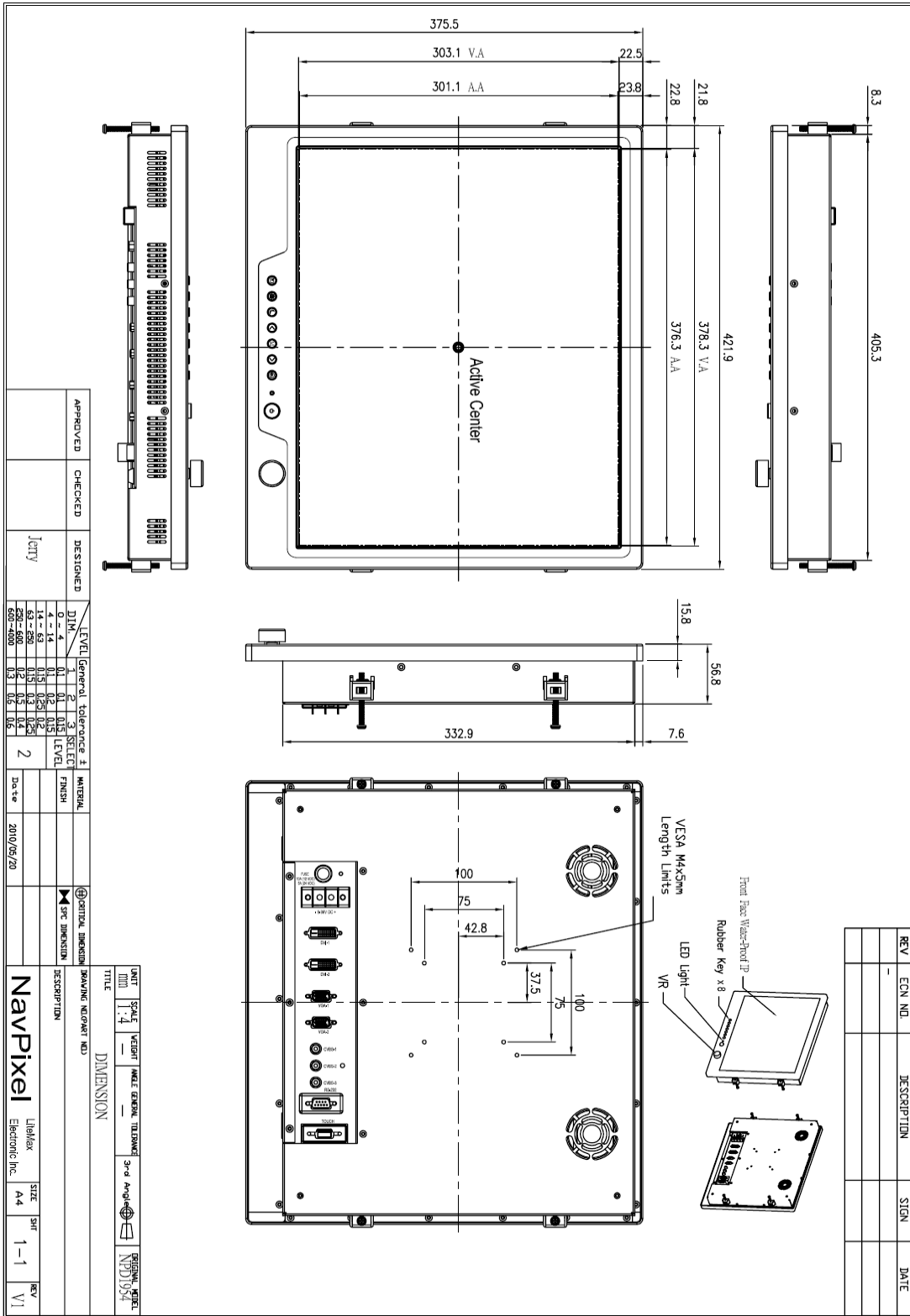
All brands or product names are trademarks or registered trademarks of their respective companies.



Mechanical Drawing

Outline Dimensions

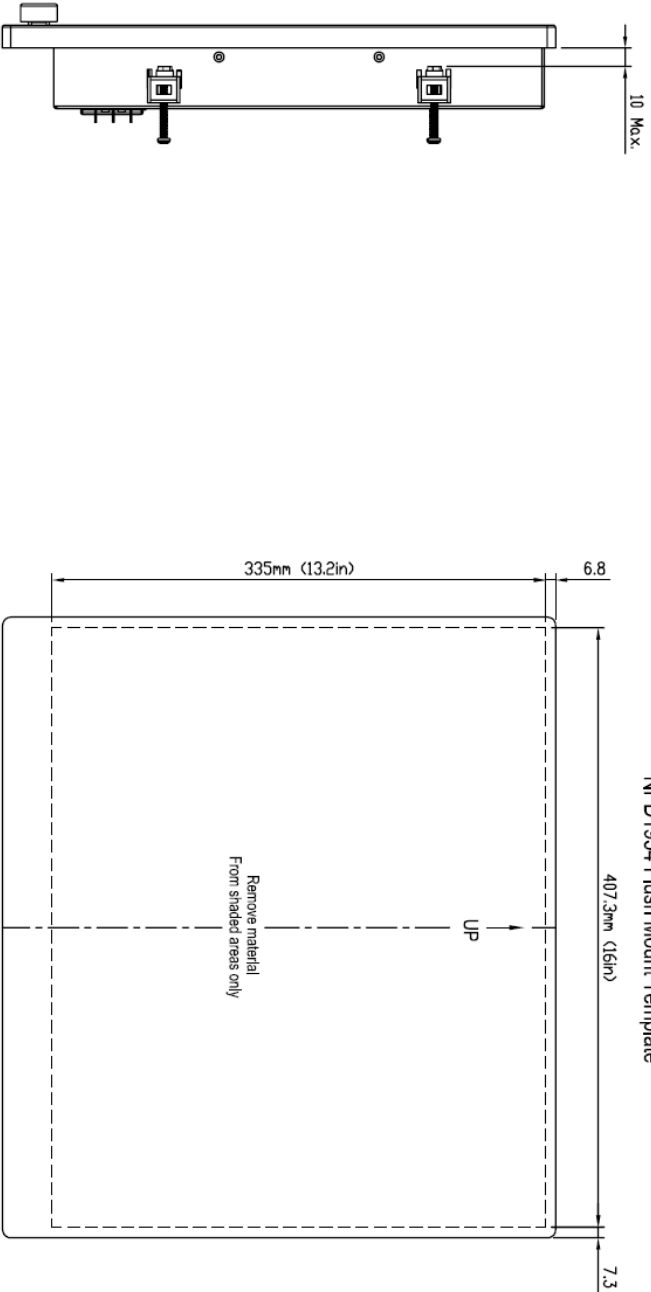
Unit:mm





REV	ECN NO.	DESCRIPTION	SIGN	DATE
-				

NPD1954 Flush Mount Template



Side View

Back View

APPROVED	CHECKED	DESIGNED	DATE
		J. Citty	

DIM.	LEVEL	General Tolerance	SELECT LEVEL	MATERIAL
0 - 4	1	0.1	0.15	
4 - 14	2	0.15	0.2	
14 - 50	3	0.2	0.25	
50 - 600	4	0.25	0.3	
600 - 4000	5	0.3	0.4	

DATE	DESCRIPTION
2010/05/20	

NavPixel	Lightbox	SIZE	A4	SHT	2-2	REV	V1
	Electronic Inc.						

UNIT	SCALE	WEIGHT	ANGLE	GENERAL TOLERANCE	3-rd ANGLE	ORIGINAL MODEL
MM	1:6					NPD1954

Output Dimension



Ordering Information

Part Number	Description
NPD1954-EGAW-H01	19",1000nits,SXGA,AR glass.LID19B02,AD8668,WP,AOT,V01
NPD1954-EGAW-H011	19",1000nits,SXGA,AR glass.LID19B02,AD8668,WP,AOT.with adaptor,V01
NPD1954-ETAW-H01	19",1000nits,SXGA,Touch-usb.(Transparency:80%),LID19B02.AD8668,WP,AOT,V01
NPD1954-ETAW-H011	19",1000nits,SXGA,Touch-usb.(Transparency:80%),LID19B02.AD8668,WP,AOT,with adaptor.V01

Optional Accessories

Part Number	Description
980000300010	SET,OTHER,CD for User. Menu & Touch driver(NPD series)
810650005110	CABLE,POWER,DC,5000mm,TER.MINAL TO OPEN,14AWG*2C+BRA.ID,COOL GRAY 7C PVC JACKET,P
810130001000	CABLE.VGA.3000mm.D-SUB15P MALE.BLUE TO D-SUB 15P MALE BLUE.BLACK.P
321189155501	Print,Menu,User,NPD.1555,V0,series,P
321179195401	Print,Menu,Install,NPD,1954,V0.Flush mount template,P
112615315401 x (4)	Metal,SPCC,NPS,1531,Lock,V0,P
214032121101 x (4)	Screw,M4,32mm,Round,Ni,P
460100002101 x (4)	Fixture,other,MP-4,V0,P
980000560010 (Optional)	SET,OTHER,ADAPTER REWORK.60W KPA-060F WITH Y TYPE.TERMINAL,P
810618301010 (Optional)	CABLE.POWER.AC.1830mm USA type
810618301090 (Optional)	CABLE,POWER,AC,1830mm Europe type
810618301050 (Optional)	CABLE.POWER.AC.1830mm UK type
810618301170 (Optional)	CABLE.POWER,AC,1830mm Australia type
810618301030 (Optional)	CABLE.POWER.AC.1830mm Japan type