



NPD2115 21.5" IP65 Sunlight Readable Marine Display

NAVPIXEL NPD2115, the high-performance, rugged touch monitor, is specially engineered to survive from the most demanding working environment. Housed in a milled billet aluminum case, the slim-profile NAVPIXEL NPD2115 is light weight and watertight. The front-mounted sunlight readable touch screen makes the industrial rugged monitor vividly and user-friendly. In addition, the high power efficiency and low heat design guarantee the stability and longevity required for mission critical deployment.

Features:

- 1000 nits Sunlight Readable LCD
- Long Life, Low Power Consumption LED Backlight
- Wide Operating Temperature
- Picture In Picture Function
- Advanced Optical Bonding (AOT)
- High Shock & Vibration Resistance
- Resistive Touch Support
- IP65 Facial Waterproof
- 9-36V DC Input

Application:

- Marine



Specifications		Preliminary
Model Number	NPD2115	
Description	21'5" IP65 Sunlight Readable Marine Display	
Backlight	LED Backlight	
Active Display Area	476.64 x 268.11mm	
Brightness	1000 cd/m ²	
Resolution	1920x1080 (FHD)	
Contrast Ratio	1000:1	
Pixel Pitch (mm)	0.248(H) x 0.248 (V)	
Viewing Angle	170 (H), 160(V)	
Display Color	16.7M	
Response Time	5ms	
Inputs	VGAx2, DVIx2, Compositex3, RS232x1, USBx1	
PIP Support	3 Stages (child, split & wide screen)	
Mechanical		
IP Rating	Facial waterproof to IP65 standards when console mounted.	
Construction	Rugged Aluminum Alloy Chassis	
Mounting	Panel (Flush) mount, VESA mount	
Dimension (mm)	525.8(W)x345.2(H)x56.4(D)	
Net Weight	TBA	
Power		
Voltage	DC Input Voltage: DC 9~36V	
Power Consumption	26W	
Environmental		
Operating Temperature	-10°C~50°C	
Non-Operating Temperature	-20°C~70°C	
Certification	CE / FCC	
Marine Type Approval	NA	

Specifications are subject to change without notice.

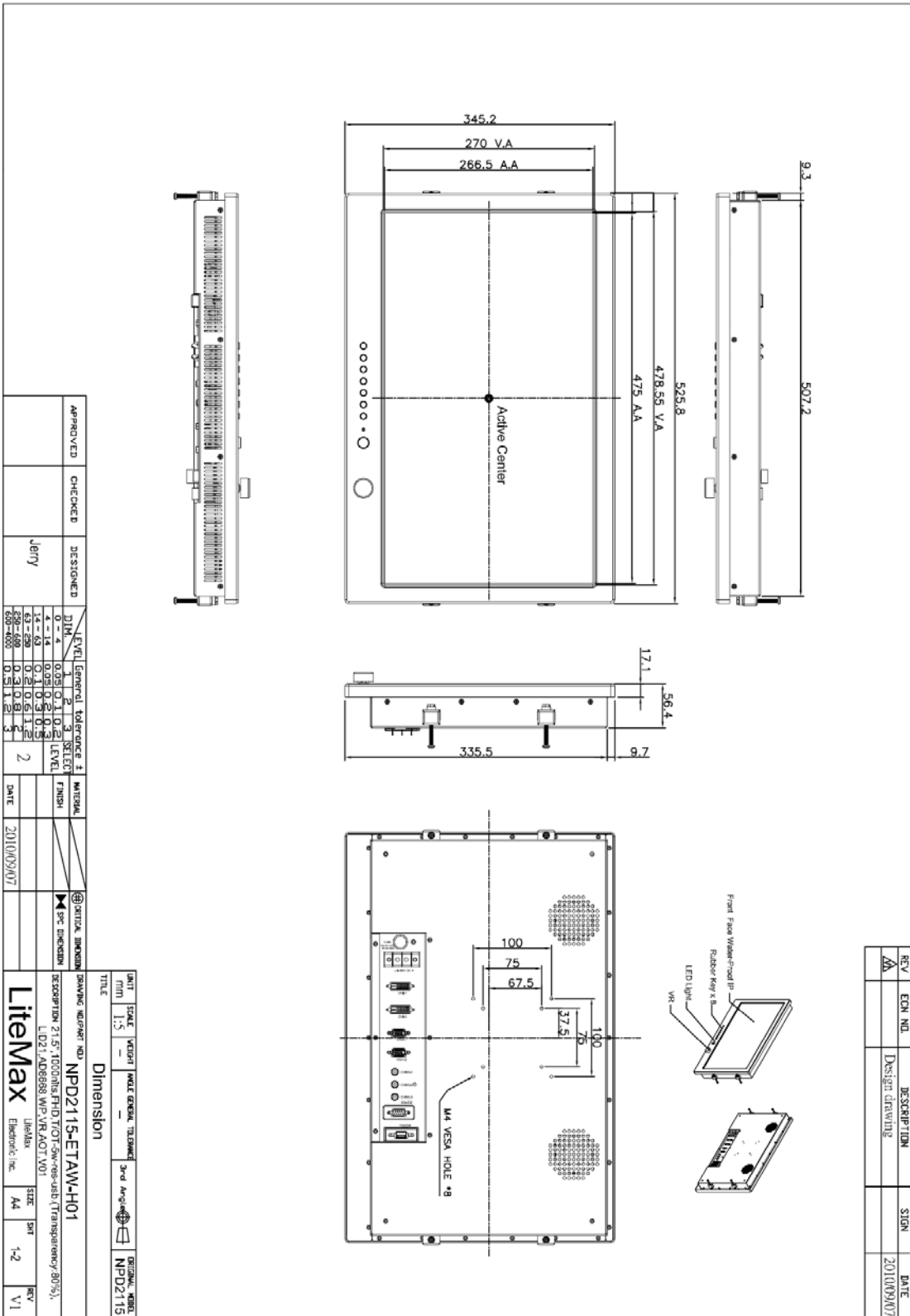
All brands or product names are trademarks or registered trademarks of their respective companies.



Mechanical Drawing

Outline Dimensions

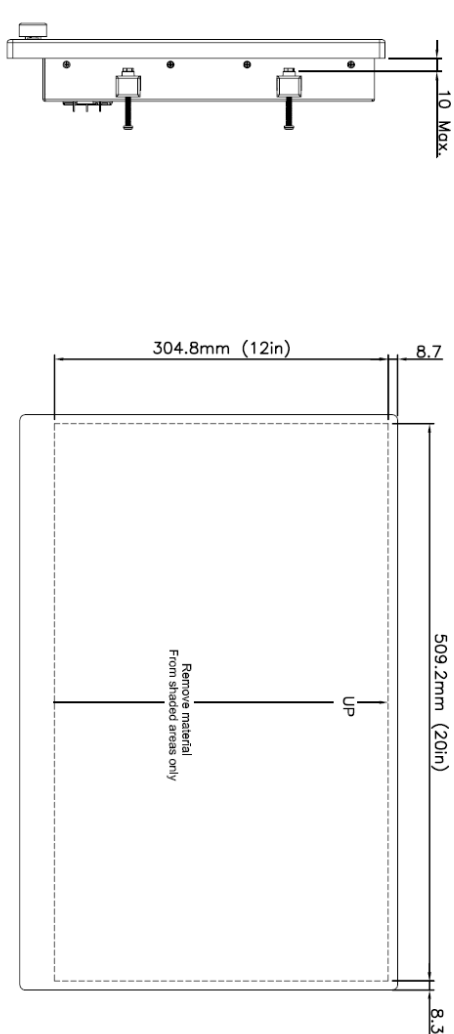
Unit:mm





REV	ECN NO.	DESCRIPTION	SIGN	DATE
A		Design drawing		2010/09/07

NPPD2115 Flush Mount Template



Side View

Back View

APPROVED	CHECKED	DESIGNED	DATE
		Jerry	2010/09/07

LEVEL	General tolerance	±	SELECT LEVEL	MATERIAL	FINISH	OPTIONAL DIMENSION
0 ~ 4	0.05	0.1	0.2			
4 ~ 14	0.1	0.3	0.5			
14 ~ 50	0.2	0.5	1.0			
50 ~ 200	0.3	0.8	1.5			
200 ~ 400	0.5	1.2	2.0			
400 ~ 600	0.8	1.5	3.0			

UNIT	SCALE	WEIGHT	MADE GENERAL TOLERANCE	3rd Angle	ORIGINAL NAME
mm	1:5				NPPD2115

TITLE	DESCRIPTION	SIZE	SHT	REV
Cutout Dimension	DRAWING NUMBER: NPPD2115-ETAW-H01 DESCRIPTION: 21.5" 1000dots FHD T/OT 5w-res-usb (Transparency:80%), L1D21,AD8688,WP,V/A,AOT,V01	A4	2-2	V1



Ordering Information

Part Number	Description
NPD2115-EGAW-H01	21.5",1000nits,FHD,AR Glass,LID21,AD8668,WP,VR,AOT,V01
NPD2115-EGAW-H011	21.5",1000nits,FHD,AR Glass,LID21,AD8668,WP,VR,AOT,with adaptor,V01
NPD2115-ETAW-H01	21.5",1000nits,FHD,T/OT-5w-res-usb.(Transparency:80%),LID21.AD8668,WP,VR,AOT,V01
NPD2115-ETAW-H011	21.5",1000nits,FHD,T/OT-5w-res-usb.(Transparency:80%),LID21.AD8668,WP,VR,AOT,with adaptor,V01

Optional Accessories

Part Number	Description
980000300010	SET,OTHER,CD for User.Menu&Touch driver(NPD series)
810650005110	CABLE,POWER,DC,5000mm,TER.MINAL TO OPEN,14AWG*2C+BRA.ID,COOL GRAY 7C PVC JACKET,P
810130001000	CABLE.VGA.3000mm.D-SUB15P MALE.BLUE TO D-SUB 15P MALE BLUE.BLACK.P
321189155501	Print,Menu,User,NPD.1555,V0,series,P
321179211501	Print,Menu,Install,NPD,2115,V0.Flush mount template,P
112615315401 x (4)	Metal,SPCC,NPS,1531,Lock,V0,P
214032121101 x (4)	Screw,M4,32mm,Round,Ni,P
460100002101 x (4)	Fixture,other,MP-4,V0,P
980000560010 (Optional)	SET,OTHER,ADAPTER REWORK.60W KPA-060F WITH Y TYPE.TERMINAL,P
810618301010 (Optional)	CABLE.POWER.AC.1830mm USA type
810618301090 (Optional)	CABLE.POWER.AC,1830mm Europe type
810618301050 (Optional)	CABLE.POWER.AC.1830mm UK type
810618301170 (Optional)	CABLE.POWER.AC,1830mm Australia type
810618301030 (Optional)	CABLE.POWER.AC.1830mm Japan type