



SLD3245
32" Wide TFT LCD Display, LED Backlight, 1000nits, WXGA

SLD3245 is a wide LCD display, built-in 1000nits high brightness for sunlight readable application. It offers the best visibility, performance and cost effective value. The high level of brightness together with fast response time and LED backlight technology, the monitor brings remarkable display quality. And guaranteeing product life cycle longevity, stability, and reliability.

Key Features

- Sunlight Readable
- LED Backlight
- High Shock & Vibration Resistance
- Low Power Consumption
- High Uniformity
- Low EMI Noise
- Wide Dimming
- Wide Viewing Angle
- Life Expectancy



Specifications

V2

Model No.	SLD3245
Description	32" Wide TFT LCD Display, LED Backlight, 1000 nits, WXGA
Display Area (mm)	697.7 (H) x 392.3(V) mm
Brightness	1,000 cd/m ²
Resolution	1366 x 768
Contrast Ratio	900 : 1
Pixel Pitch (mm)	0.51(H) x 0.51(V)
Viewing Angle	176°(H), 176°(V)
Display Colors	16.7M colors
Response Time (Typical)	7ms (Typical)
Power Input	AC 100V-240V
Power Consumption	72w
Dimensions (mm)	740.2 x 428.8 x 53.5mm
Weight (Net)	9.8Kg
LED Driving Board	LID29A01
Control Board	<input type="checkbox"/> AD5621GA <input type="checkbox"/> AD5621GD <input type="checkbox"/> AD5766GDVA <input type="checkbox"/> AD2662GDVAR
<input type="checkbox"/> AD5621GA	VGA+Audio
<input type="checkbox"/> AD5621GD	VGA+DVI
<input type="checkbox"/> AD5766GDVA	VGA+CVBS+S-Video+Audio (Optional DVI)
<input type="checkbox"/> AD2662GDVAR	VGA+DVI (Optional CVBS / S-Video/ Component / Audio)
F / R Control Button	<input type="checkbox"/> 5 Key <input type="checkbox"/> 4K ey
<input type="checkbox"/> 5 Key	Power Switch, Menu, Select (+,-), Auto
<input type="checkbox"/> 4 Key	Power Switch, Menu, Select (+,-),
OSD Menu	Brightness, Contrast, H/V Position, Color, Phase, Clock...
Optional	<input type="checkbox"/> AOT <input type="checkbox"/> Touch Screen

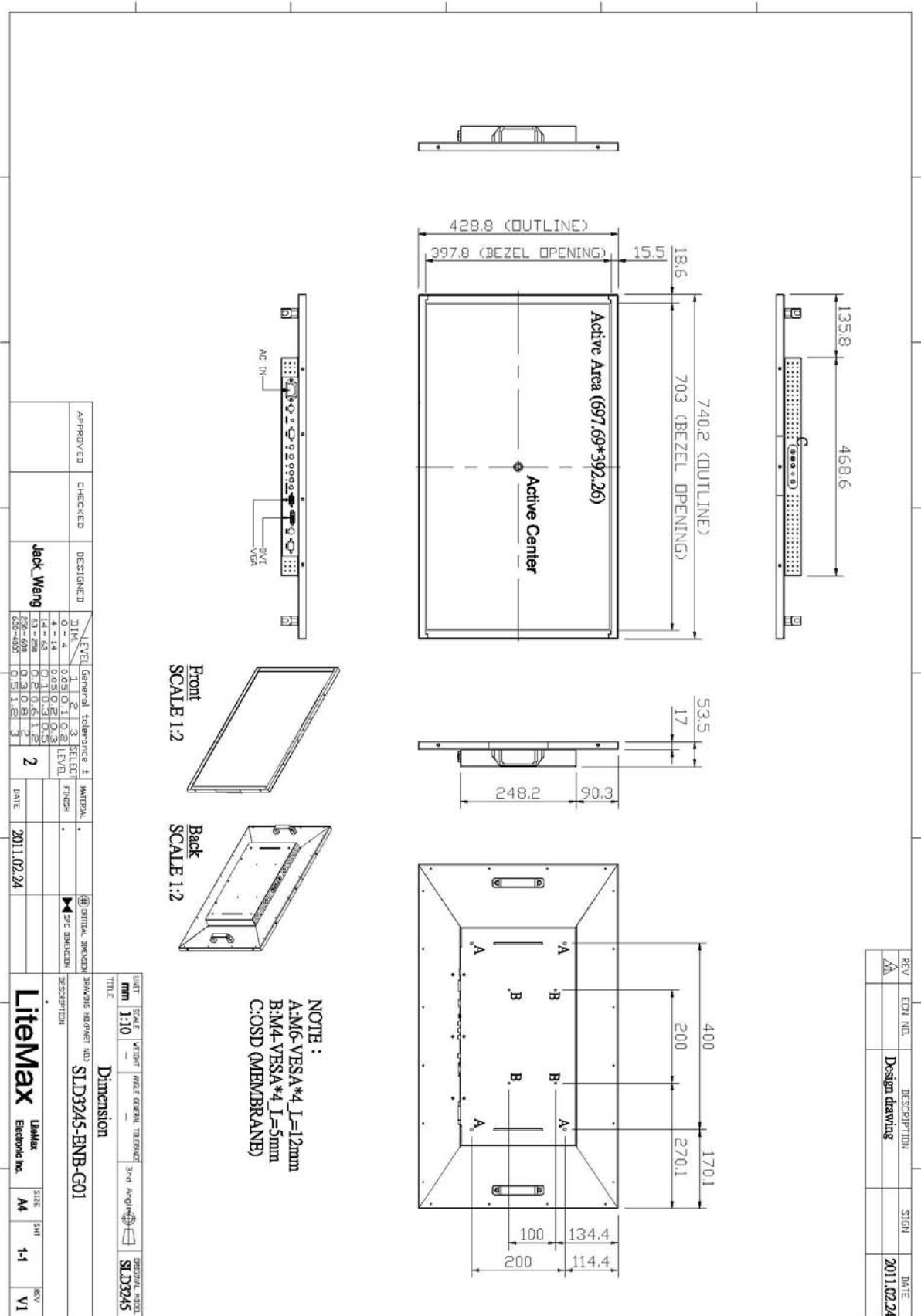
*Specifications are subject to change without notice.
 All brands or product names are trademarks or registered trademarks of their respective companies.*



Mechanical Drawing

Outline Dimensions

Unit:mm





Ordering Information

Model Name	Description
SLD3245-ENB-G01	32", 1000nits, WXGA, LID29A01, AD2662GD, DPS-210, O/B, V01

Optional Accessories

Part Number	Description
810618301010	CABLE.POWER.AC.1830mm USA type
810618301090	CABLE,POWER,AC,1830mm Europe type
810618301050	CABLE.POWER.AC.1830mm UK type
810618301170	CABLE.POWER,AC,1830mm Australia type
810618301030	CABLE.POWER.AC.1830mm Japan type