



SLO1768(WT)

17" Open Frame TFT LCD Display, LED Backlight, 1600nits, SXGA(1280x1024)

17" open frame TFT LCD panel, built-in 1600 nits high bright for sunlight readable LCD display, high transmittance color filter, high transmission polarizing plates, Low Power Consumption, suitable for kiosk, advertising, POS, marine, transportation, gaming, studio display, gas pump.

Key Features

- Sunlight Readable
- LED Backlight
- SXGA(1280x1024) High Definition
- High Shock & Vibration Resistance
- Low Power Consumption
- High Uniformity
- Low EMI Noise
- Wide Dimming
- Wide Operation temperature
- Life Expectancy
- Smart Panel design. The thickness is only 36.2mm



Specifications

V2

Model No.	SLO1768(WT)
Description	17" Open Frame TFT LCD Display, LED Backlight, 1600nits, SXGA(1280x1024)
Display Area (mm)	337.9(H) x 270.3 mm
Brightness	1600 cd/m ²
Resolution	1280x1024 (SXGA)
Contrast Ratio	1000 : 1
Pixel Pitch (mm)	0.264(H) x 0.264(V)
Viewing Angle	+85°~ -85°(H), +80°~ -80°(V)
Display Colors	16.7M
Response Time (Typical)	30ms
Power Consumption	36.55W
Dimensions (mm)	389.7x297.3x36.2mm
Weight (Net)	2.5kg
LED Driving Board	LID17A09
Control Board (Optional)	<input type="checkbox"/> AD2662GDVAR
<input type="checkbox"/> AD2662GDVAR	VGA+DVI (Optional S-Video/ Component / Audio)
F / R Control Button	<input type="checkbox"/> 5 Key <input type="checkbox"/> 4 Key
<input type="checkbox"/> 5 Key	Power Switch, Menu, Select (+,-), Auto
<input type="checkbox"/> 4 Key	Power Switch, Menu, Select (+,-),
OSD Menu	Brightness, Contrast, H/V Position, Color, Phase, Clock...
Optional	<input type="checkbox"/> AOT <input type="checkbox"/> Touch Screen

Specifications are subject to change without notice.

All brands or product names are trademarks or registered trademarks of their respective companies.

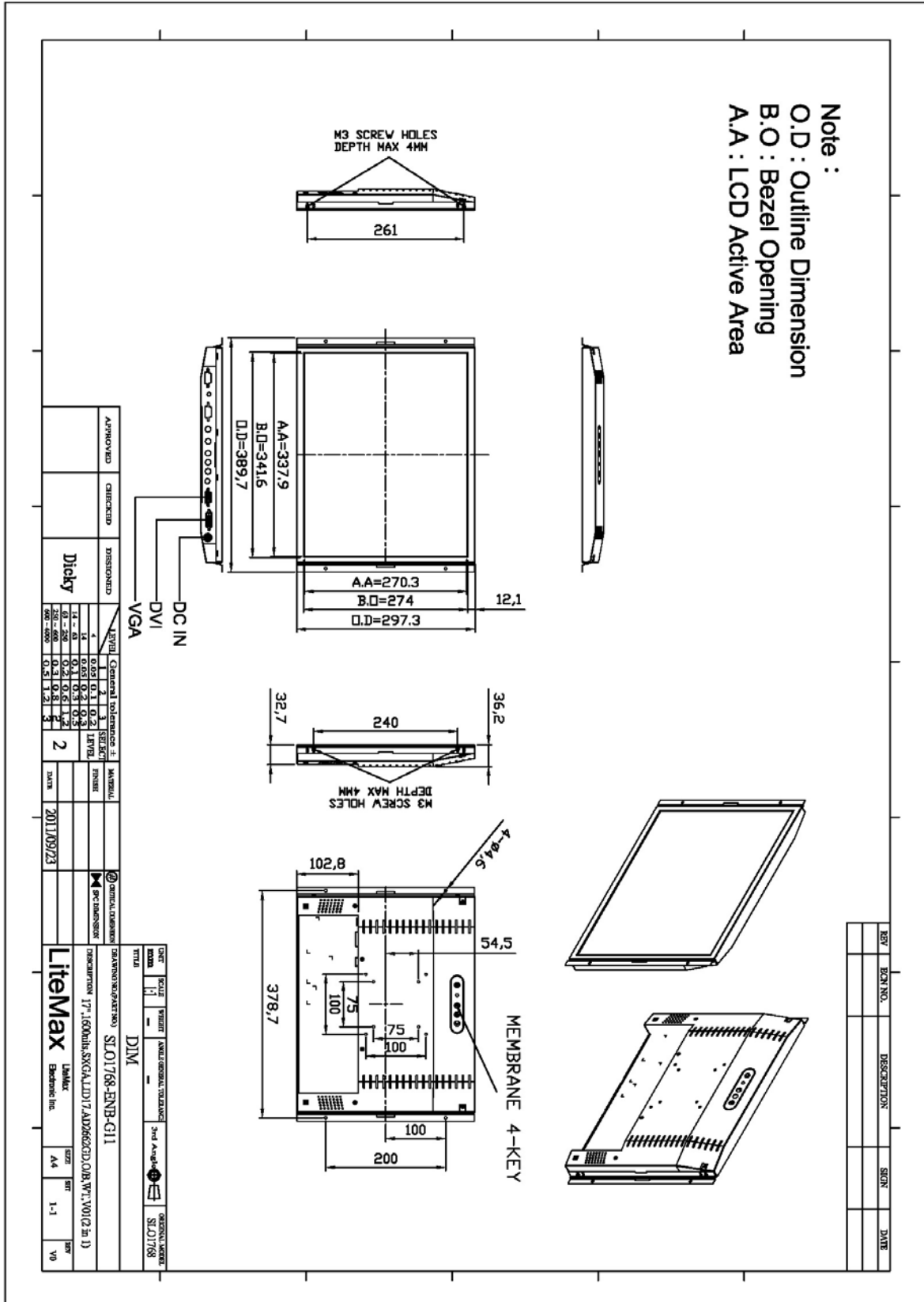
SLO= Panel+LED Driving Board+Control Board



Mechanical Drawing

Outline Dimensions

Unit:mm





Ordering Information

Part Number	Description
SLO1768-ENB-G11	17",1600nits,SXGA,LID17.AD2662GD,O/B,WT,V01(2 in 1)
SLO1768-ENB-G12	17",1600nits,SXGA,LID17.AD2662GD,O/B,WT,V01

Optional Accessories

Part Number	Description
840612051210	ADAPTER,AC/DC,12V/5.4A,65W,Atech OEM A065112-TDx.4P SLIDING CAP,P
810618301010	CABLE.POWER.AC.1830mm USA type
810618301090	CABLE,POWER,AC,1830mm Europe type
810618301050	CABLE.POWER.AC.1830mm UK type
810618301170	CABLE.POWER,AC,1830mm Australia type
810618301030	CABLE.POWER.AC.1830mm Japan type