



700TSU INSTALLATION MANUAL

2 | Table of Contents

Features	03
Specifications	04
Quick-Start	05
Remote Control	07
Hardware Installation	10
Software Installation	14
Touch Screen Driver Installation	
Additional Info	22
Owner's Record	23

Input Signals

USB input: 1 channel

VIDEO (RCA) input: 2 channels

AUDIO (RCA) input: 2 channels

Features

- o Connect computer video signal with a simple USB cable
- o Capable of connect six USB Monitor simultaneously
- o 5 wires for the touch panel
- o 2 audio input
- o NTSC/PAL
- o 16:9/ 4:3
- o LED backlight
- o Automatic and manual backlight adjust
- o Build in USB video card which allow the video signal to transfer through USB port
- o Build in USB sound card which allow the sound signal to transfer through USB port
- o Monitor is powered by USB port. External DC power is not required. However, the brightness and volume is only running at 70% efficient at USB powered mode. When DC plugged in, the brightness and volume will be increased.

4 | Specification

Specification

Last input memory
USB2.0
Last power setting memory
Auto display adjustment
Mirror image flip
VESA 50mm mounting holes
26 pin heavy-duty connector with connector locking
Supports 10V DC~ 35V DC
E-Mark certified for automotive use

Display Specifications

Screen Size: Diagonal 7" (16:9)
Physical Resolution: 800(H) x 480(V)
Pixel Pitch: 0.0025(H) x 0.0075(V) (in)
Dot Resolution: 2400 x 480=1.152.000 (dots)
Supported Resolution: 640 x 480 -1920 x 1080
Supported Refresh Rate: 60-75Hz
LCD Panel Brightness: 500 cd/m2
Contrast Ratio: 400:1
Response Time: 5 – 11ms
Viewing Angle: Vertical: 70 / Horizontal: 70
Colors: 18-bit (262.144 colors)

Physical Specifications

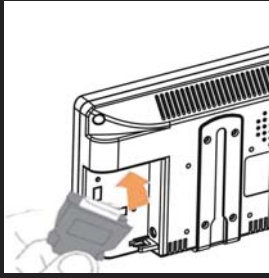
Video Source Input
USB x1
RCA composite video female connector x2
Audio Source Input
RCA audio female connector x2
DC 3.5 mini stereo plug x1
Touch Panel/O
USB connector x1
Power Source Input
Single 12V DC_IN (Supports 10V-35V)
External Input Buttons
OSD buttons for Power / Select / Menu / Increase / Decrease
PWR button for Power switch
Dimension (In): 7.72(W) x 4.88(H) x 1.42(D)
Weight (lb): 1.54

Electrical Specifications

Operating Voltage Range: DC 10V-35V
Power Supply: DC 12V
Power Consumption<10W
@ Audio input<150MV

Other Specifications

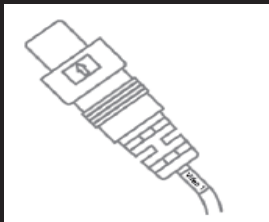
Operating Temperature: -4 °F - 158°F
Storage Temperature: -22 °F – 176 °F
FCC. CE. E13. ROHS Certification
18 Month Warranty



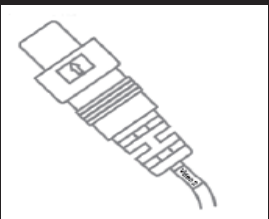
Attach the 26-Pin connector at the back of the monitor



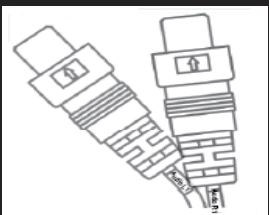
Attach the USB plug to the computer's USB receptacle connector. Plug in the second USB cable is optional. It is included as backup power source



Attach your "video source 1" (e.g. VCR, Video Game Console) to the Yellow RCA connector marked Video1



Attach your "Video Source2" (e.g. Rear view Camera) to the Yellow RCA connector marked as Video2



Attach your "Audio Sources" to the white/ red RCA connectors marked as Audio1 and Audio2. The sound will be output through the monitor's internal speaker

6 | Quick-Start



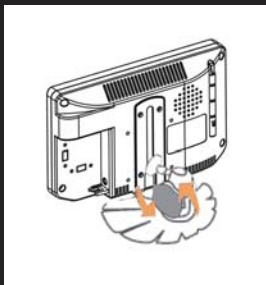
Install the Touch screen driver from the included CD disk
Please follow the installation on page 14



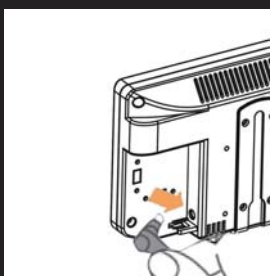
Slide Monitor into optional mounting stand



Secure "Height" position by adjusting knob

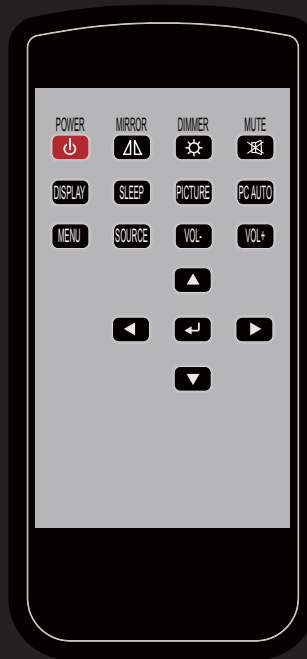


Secure "Tilt" position by adjusting knob



Insert the power adapter as shown. (Optional)

Monitor is powered by USB port. External DC power is not required. However, the brightness and volume is only running at 70% efficient at USB powered mode. When DC plugged in, the brightness and volume will be increased.



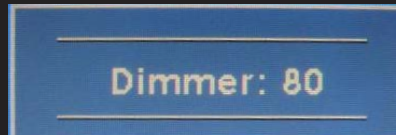
01. Power Button: Turn the monitor ON or OFF.
02. Mirror Button: Enable or Disable the mirroring of the display. Continue to press it and choose the mirroring you want.
03. Dimmer Button: Dim the brightness of the display by pressing this key continually to set the brightness level of the display. (Only available when auto sensor is disabled.)
04. Mute Button: Mute the speaker. Press again to restore the voice of speaker.
05. Display Button: Display the message of the current input signal on the screen.
06. Sleep Button: Enable or disable the sleep timer. Press this button to select and set the time to turn off the monitor automatically.
07. Picture Button: Enable to select the picture mode you prefer. Press this button and then you can select standard, user, bright or soft.
08. PC auto button: Enable to adjust the picture automatically, only available in VGA mode
09. Menu Button: Enable the OSD menu. Press this button again to exit.
10. Source Button: Enable to switch to different source input. (VGA, HDMI, AV, CCD)
11. Vol+ / Vol- Button: Increase or Decrease the Volume.
12. Up / Down Button(▲ / ▼): Navigate Up or Down in OSD menu.
13. Left / Right Button(◀ / ▶): Navigate Left or Right in OSD menu, as well as decreasing or increasing the value of setting in OSD.
14. Enter Button: confirm the setting or selection.

8 | Remote Control

Instructions for remote controller shortcuts

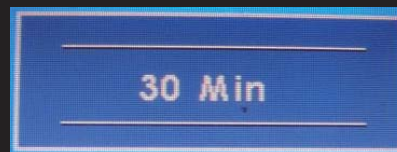
1. Dimmer (adjust the brightness)

By pressing the Dimmer button, it will adjust the brightness level from 0, 20, 40, 60, 80 and 100. Default is 100 (Only available when auto sensor is disabled)



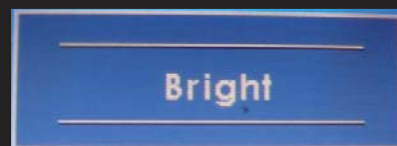
2. Sleep (set the sleep time out)

Select the time to automatically turn off the monitor.
The minimum is 15 minutes and the maximum is 120 minutes



3. PICTURE (set the mode of the picture)

Enable to select the picture mode you prefer. Press this button and then you can select standard, user, bright or soft



4. PC AUTO (auto adjust, only on USB Video)

By pressing PC AUTO, it will auto adjust the image.

5. SOURCE (select the source)

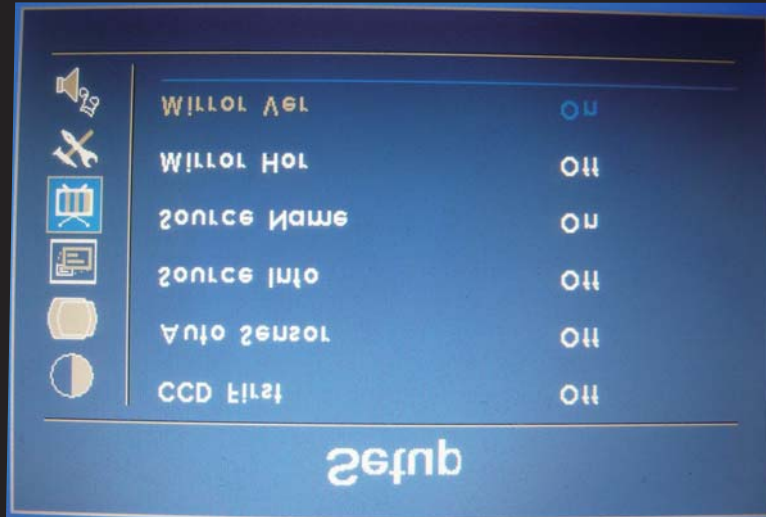
Press this button to select the input signal to display (USB Video, AV1, AV2).

If one of these mode is disabled in OSD menu, please setup under

(Function --> Source Enable)

6. MIRROR (image mirror)

Enable or Disable the mirroring of the display. Continue to press it and choose the mirroring mode you wish to display

**7. Mute**

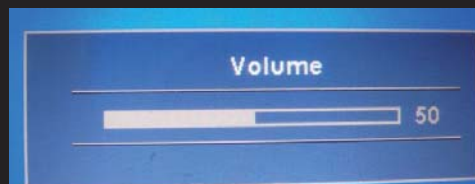
Mute the speaker. Press again to restore the voice of speaker

**8. DISPLAY (display mode)**

Display the message of the current input signal on the screen






**9. VOL-/ VOL+**

Volume adjustment



10 | Hardware Installation

Buttons description:

1.  Power button: press to turn on or off the monitor
2.  Select button: Press to select the input signal to display. Press or right (▶) to highlight the input source desired and then press to make the selection.
3.  Menu button: Press the button to show the OSD menu. left (◀) or right (▶) to navigate through the menu. Press through a list of settings and options. Press the left () or right () buttons to change the values of settings. Press Menu button again to leave the OSD menu.
4.  Right button: Press this button to increase volume inside the OSD menu.
5.  Left button: Press this button to decrease volume inside the OSD menu.

Ambient Light Sensor Description

Ambient Light sensor can be enabled or disabled in the OSD by going into the “MISC” category, and select the option “Auto Sensor”. When Auto Sensor is enabled, the LCD backlight brightness will be adjusted automatically according to the ambient lighting condition.

Note:

The brightness cannot be adjusted manually through the dimmer button or through the OSD menu when the Auto Sensor function is enabled

OSD (On-screen display) Menu

Press MENU to display the OSD on the screen, then press UP/DOWN (or LEFT/RIGHT from the front control panel) to select different category in highlight. Press ENTER (or SOURCE) to adjust the selected highlighted category. Under the selected item page, press UP/DOWN (or SOURCE) to select the item from the list, use LEFT/RIGHT to adjust. To select the sub-menu, please press LEFT to enter to the sub-menu.



1. COLOR

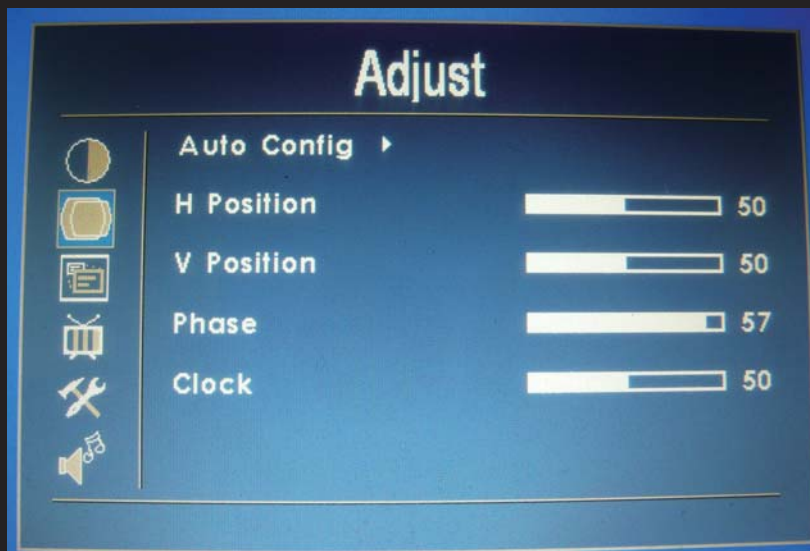
Brightness: Adjust brightness by pressing Left or Right buttons. Press left to decrease brightness, and press Right to increase the level of brightness.

Contrast: Adjust contrast by pressing Left or Right buttons. Press left to decrease contrast and Right to increase the level of contrast

Sharpness: Adjust sharpness by pressing Left or Right buttons. Press left to decrease contrast and Right to increase contrast

Color Temp: Set the color temp to the desired setting: 6500K, 9300k, and User

Backlight: Adjust backlight brightness



2. ADJUST (VGA mode only)

Auto Config: Adjust display automatically

H Position: adjust the Horizontal position by pressing the left or right buttons.

V Position: adjust the Vertical position by pressing the left or right buttons.

Phase: Phase (fine) adjustment. Image flickering can be removed through changing this setting (only valid for VGA setting)

Clock: adjust the horizontal sync width of the screen image



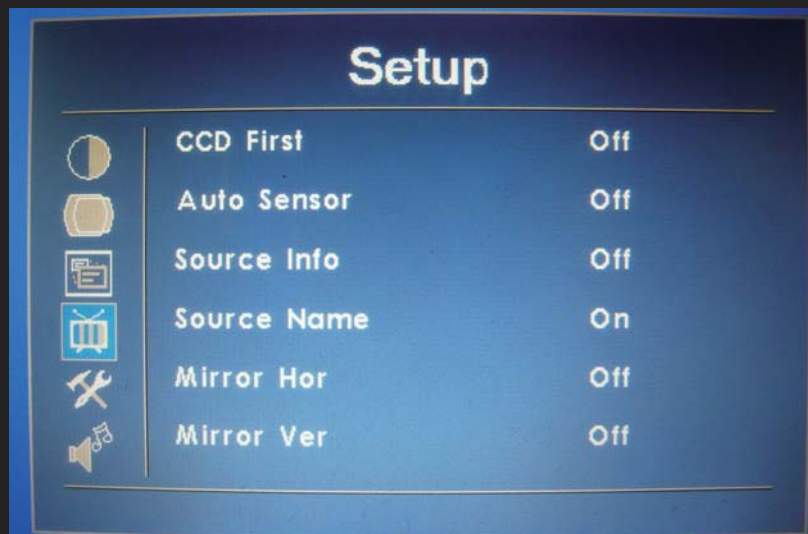
3. OSD

H Position: Adjust the OSD Horizontal position by pressing the left or right buttons.

V Position: Adjust the OSD Vertical position by pressing the left or right buttons.

OSD Timeout: Adjust the time out of the OSD

Transparent: Adjust the transparency of the OSD screen image



4. SETUP

CCD First: Set whether to have monitor switch to CCD signal automatically if a signal is present. Default is OFF

Auto Sensor: Enable or disable the auto light sensor of surrounding environment.

"ON" means the monitor can automatically adjust the brightness of the display according to the surrounding environment.

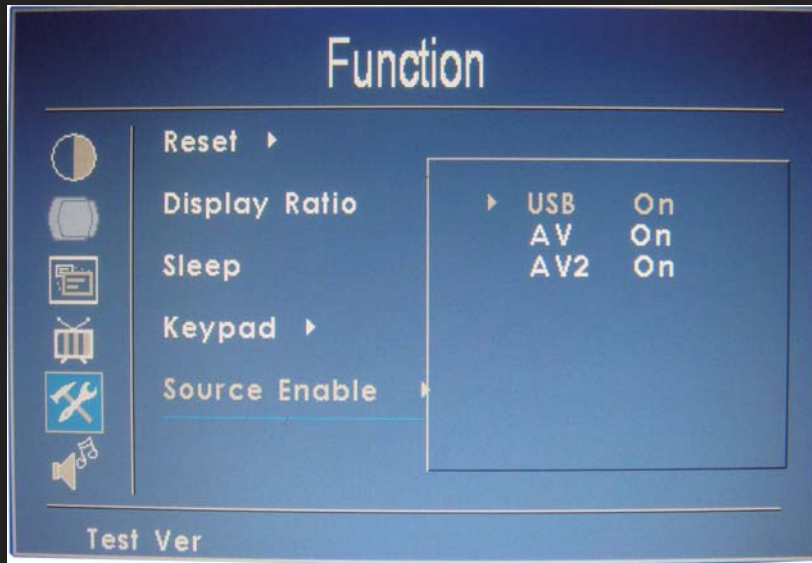
Please note: while Auto Sensor is enabled, the option of dimmer or backlight inside the OSD can not work until auto sensor is disabled.

Source Info: Select to turn OFF or turn ON displaying of On Screen Source Information.

Source Name: Display the source of input signal. If it is ON, it will display the information on the left corner of the screen when DISPLAY button is pressed on remote control; default ON

Mirror Hor: Adjust the horizontal mirroring position. If it is ON, the image will be on the left and right side; default OFF

Mirror Ver: Adjust the vertical mirroring position. If it is ON, the image will be on the upper and lower side; default OFF



5. FUNCTION

Reset: Reset to Factory default setting.

Display Ratio: Select the display mode to 16:9, 4:3 and Auto

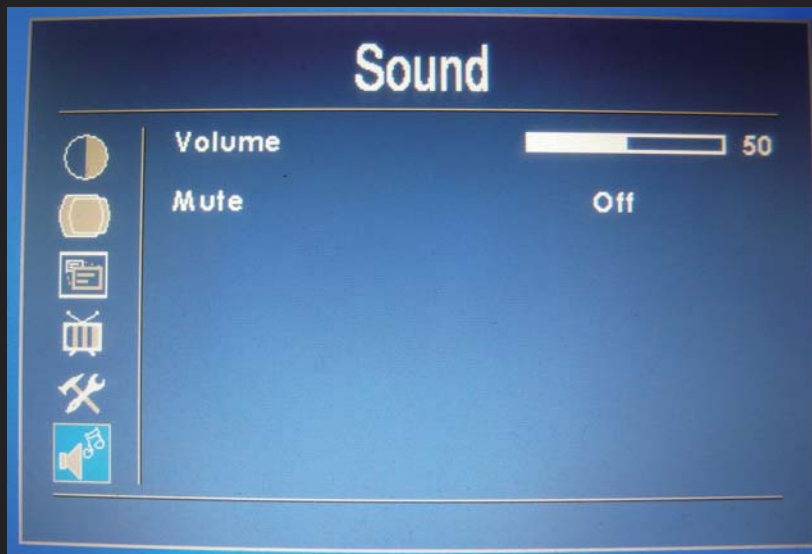
Sleep: Select the time to automatically turn off the monitor.

The minimum is 15 minutes and the maximum is 120 minutes.

Keypad: The function allows you to disable or enable the buttons at the front of the monitor. Source, Menu, Right, and Left buttons can be disabled or enabled.

Source Enable: Select to Enable or disable the input signal. If an input signal is turned off, the source will be disable.

Touch Controller: Switch the power source for touch control board.



6. SOUND

Volume: Adjust the audio volume of built-in speaker

Mute: Enable or disable muting of built-in speaker

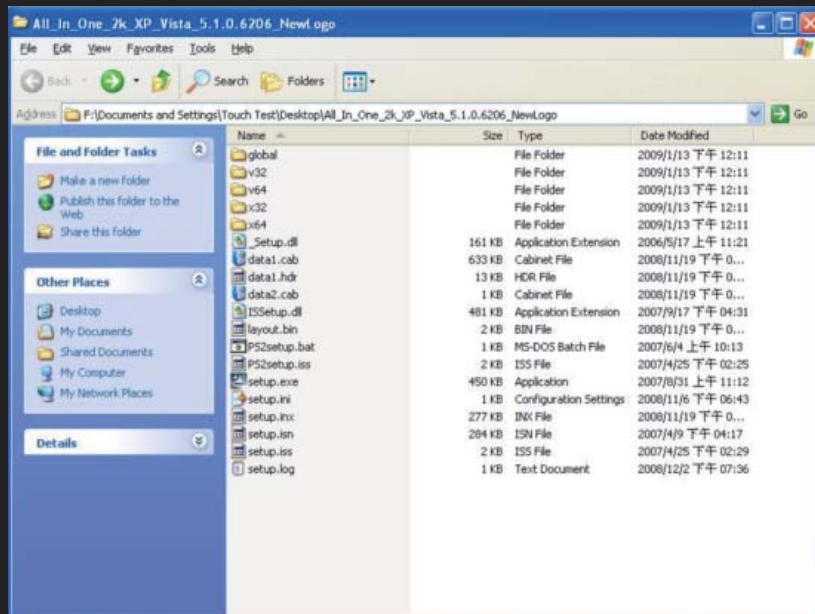
14 | Software Installation

Installing Driver for DisplayLink Graphic Adaptor

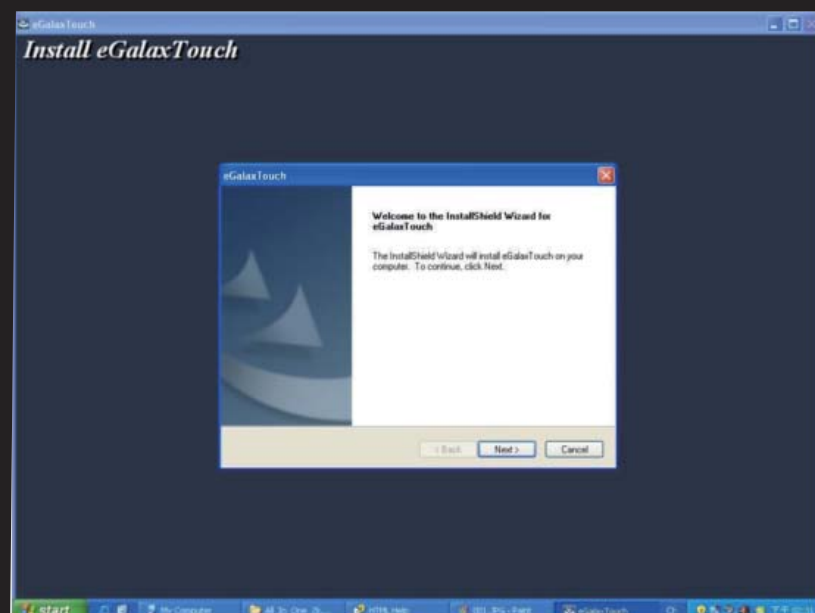
700TSU has build in driver for DisplayLink graphic adaptor. Your system should auto run the installation wizard when the monitor is plugged in. If you are experiencing trouble with the installation, please refer to the "DisplayLink Graphics Adapter User Manual" that came along with the package.

Installing Touch Screen Driver for 700 TSU:

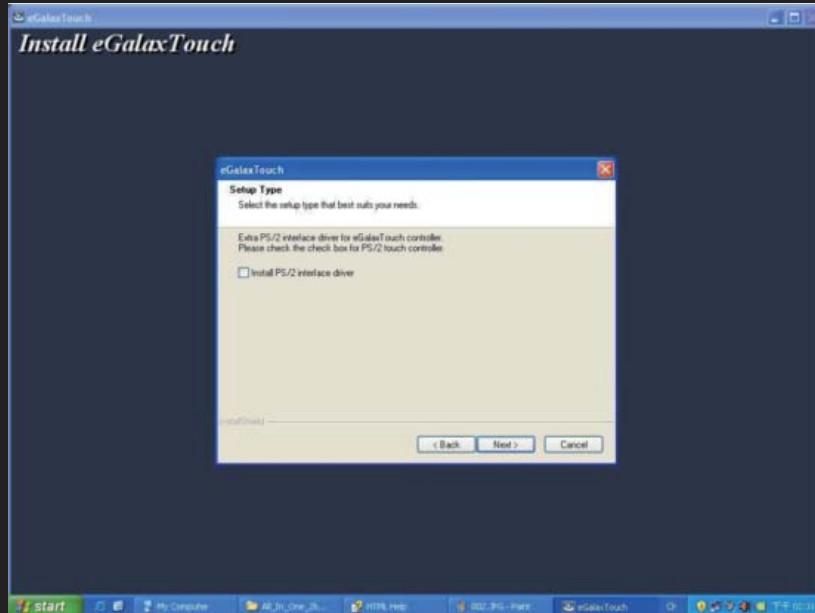
eGalaxTouch driver software installation package was created with Installshiled tool. The installation package contains files as below



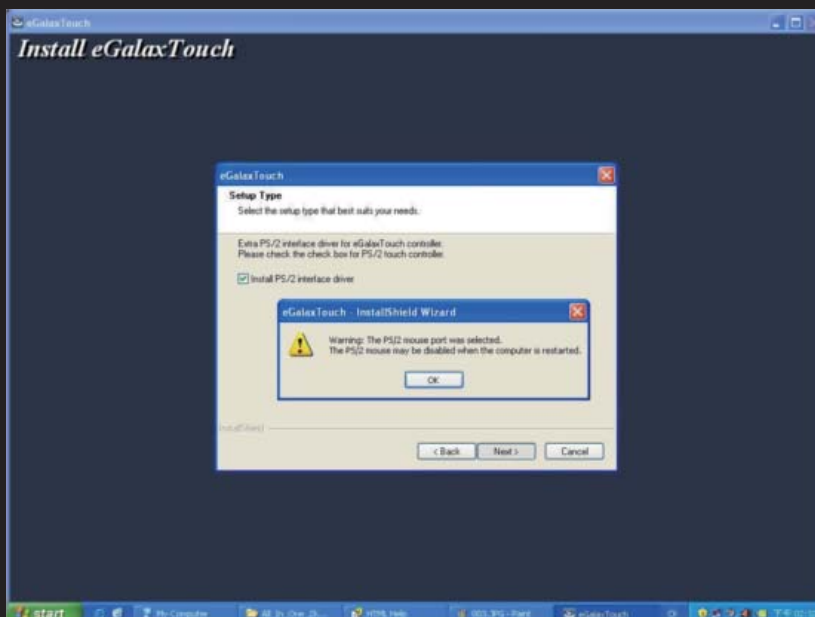
Double click at the setup.exe file to start software driver installation. Then, the setup program will guide user to complete software installation.



Press Next button to continue installation, then, a new dialog popped up as below,

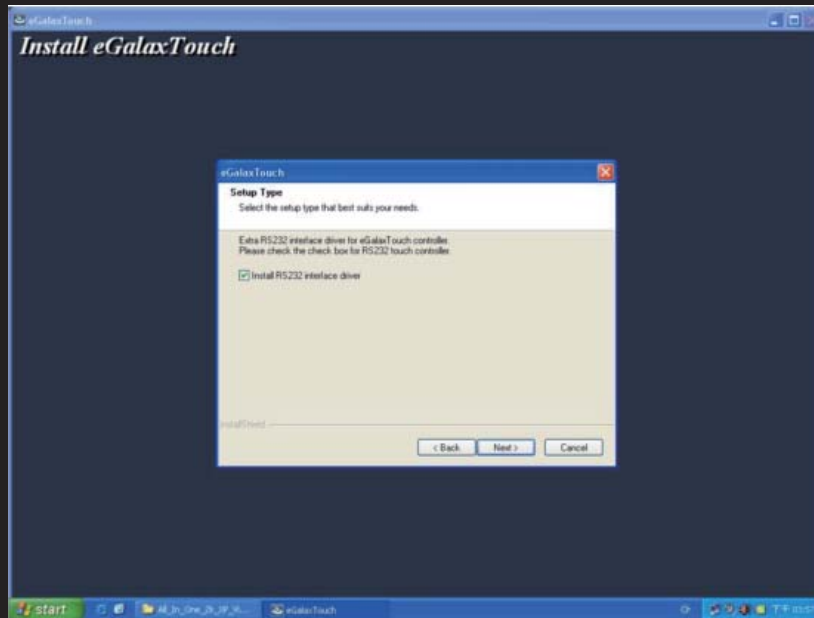


This dialog shows to ask user if the PS2 filter driver for touch screen to be installed. User can check this check for PS2 filter driver installation. The standard PS2 filter driver can still work well after this filter driver installed because eGalaxTouch PS2 filter driver can work with both standard PS2 mice and PS2 touchscreen. But, this filter driver may does not work with other devices with the PS2 mouse port. After check or uncheck this check box, press Next button to continue installation. Then, it shows new dialog as below,

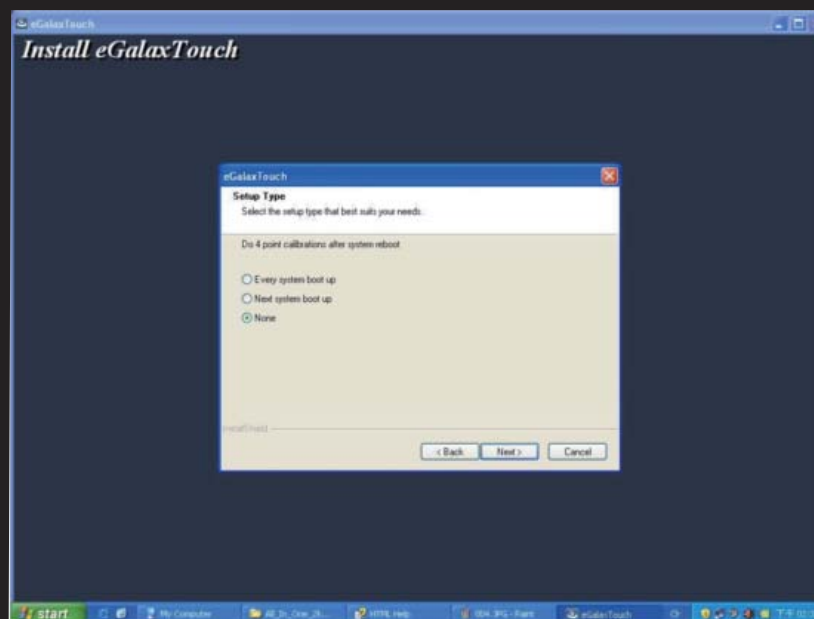


16 | Software Installation

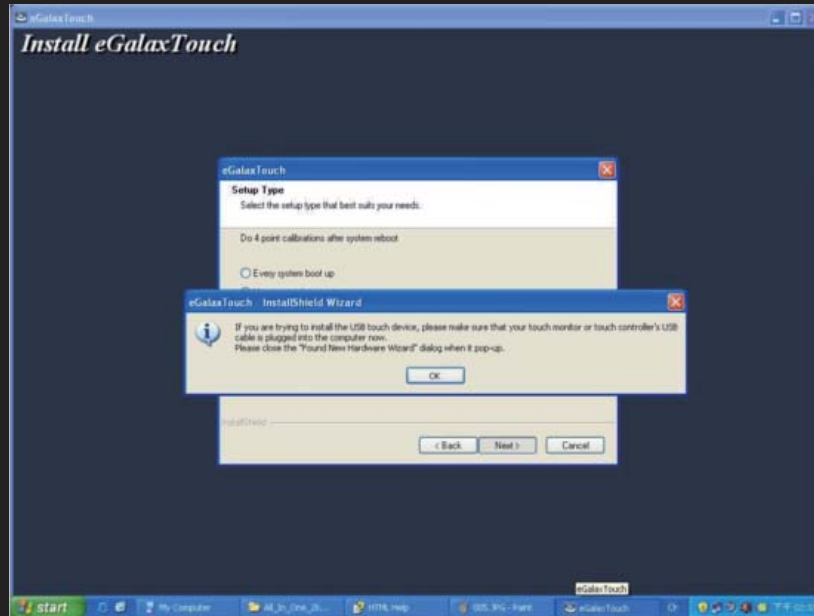
This dialog shows to ask user if the RS-232 driver for touch screen to be installed. User can check this check for RS-232 driver installation. After check or uncheck this check box, press Next button to continue installation. Then, it shows new dialog as below,



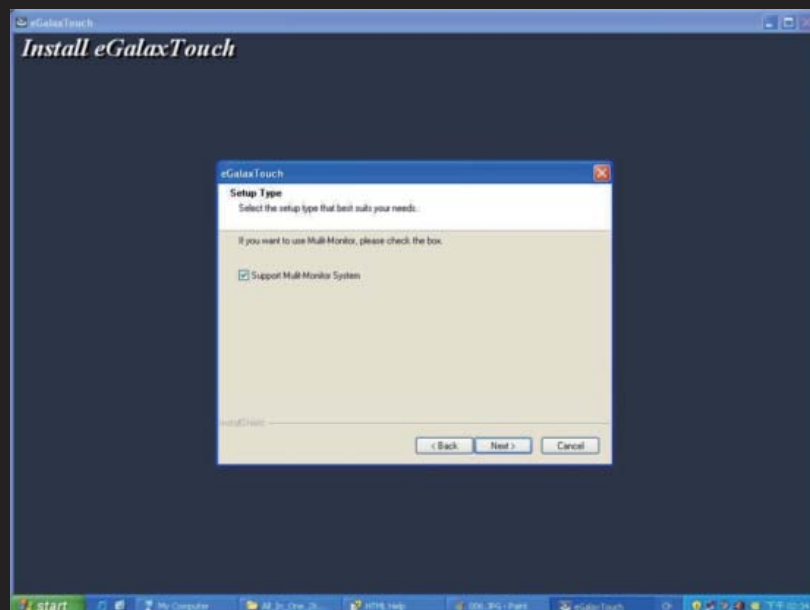
Also, eGalaxTouch software provides user with a fast 4 points calibration. If the system needs 4 points calibration to make sure the touch accuracy every system reboot, user can check this check box. The 4 points calibration window will be popped up for calibration whenever system boot up if this check box was checked during driver software installation. Press Next button to continue installation. The setup program prompts a message box to hint



user to make sure that the eGalaxTouch USB controller devices were well connected with system USB ports to guarantee the USB eGalaxTouch device drivers updated after driver installation. Then, just press OK to continue,

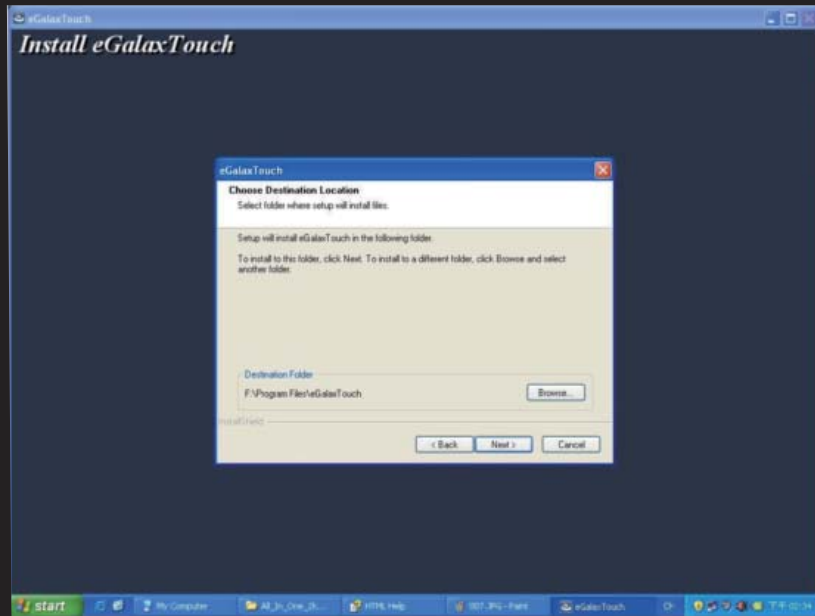


eGalaxTouch driver package supports multiple monitor operation. If your application is for multiple monitors system, please check the check box to support multiple monitors. So that, the a multiple monitor setting property page will be shown in eGalaxTouch utility. Then, press Next to continue.

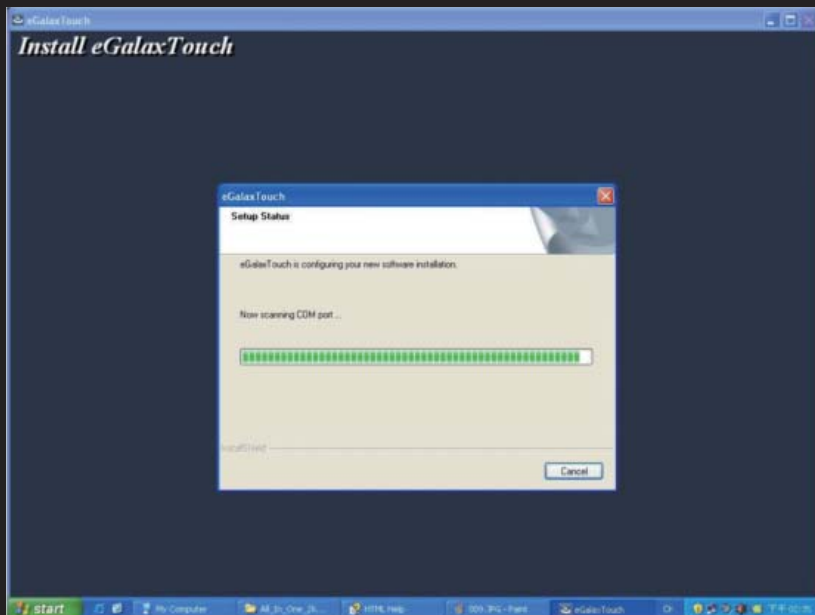


18 | Software Installation

A pop up window for user to choose the target path the files will be copied to. Then, Press Next to continue,

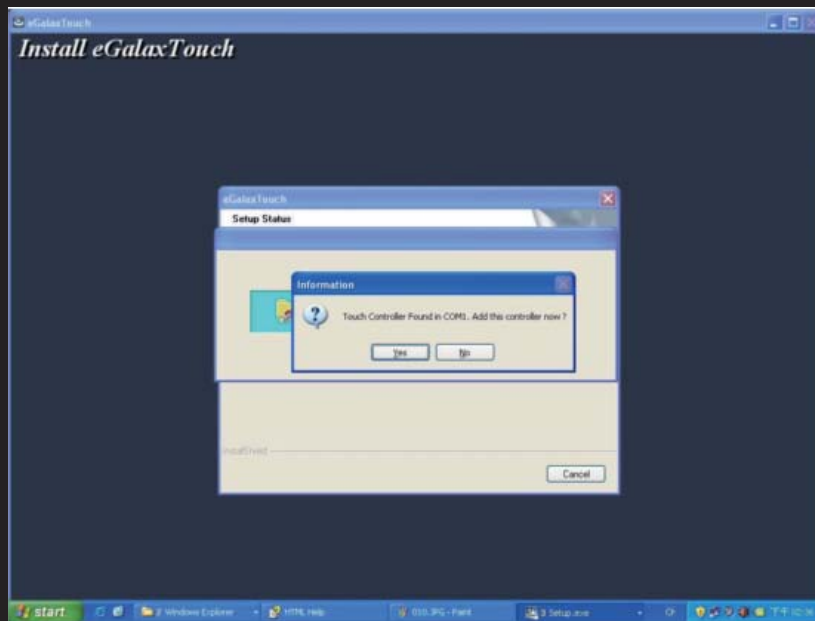


A dialog popped up for user to assign the target program folder. Press Next

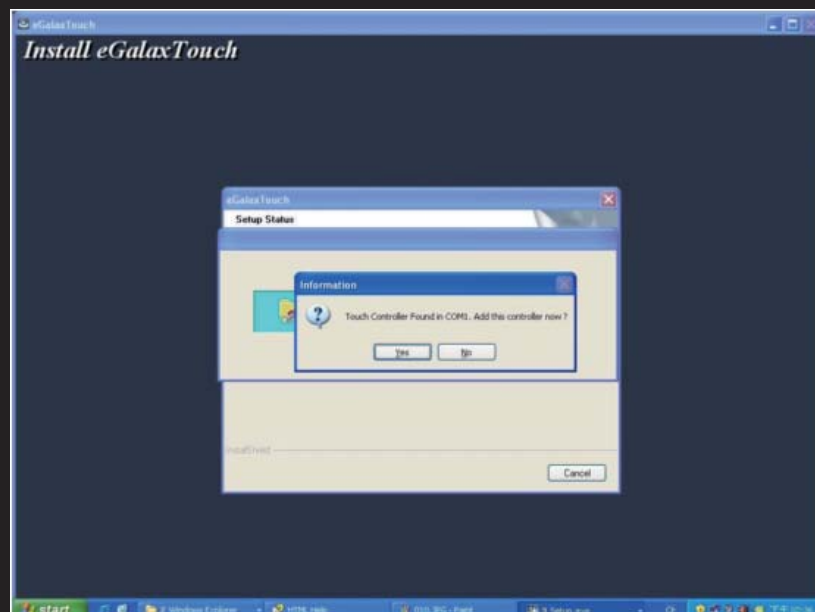


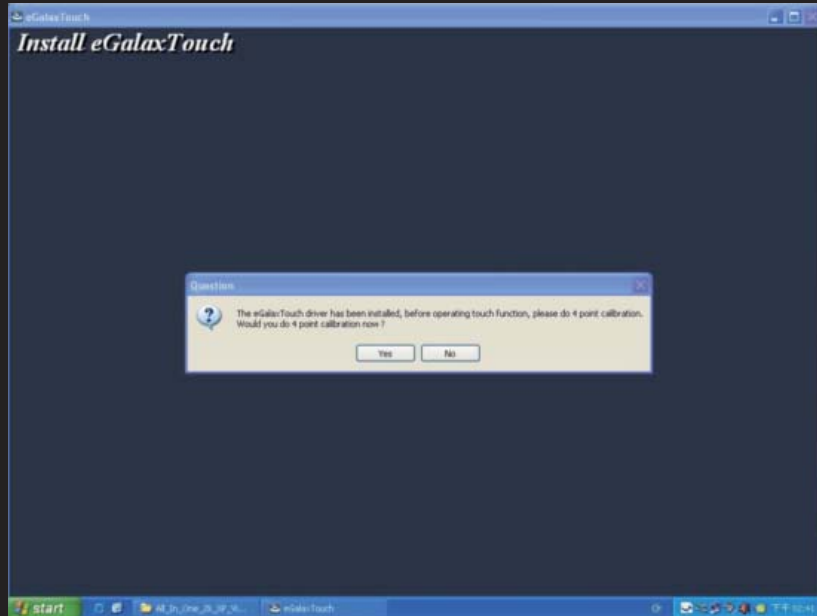
If install RS-232 driver check box was checked, the setup program will scan system COM ports.

The setup program will scan system COM ports to detect if any eGalaxTouch serial device was connected. If yes, it also pops up a message box for user to make sure if setup program install driver for this new found device.

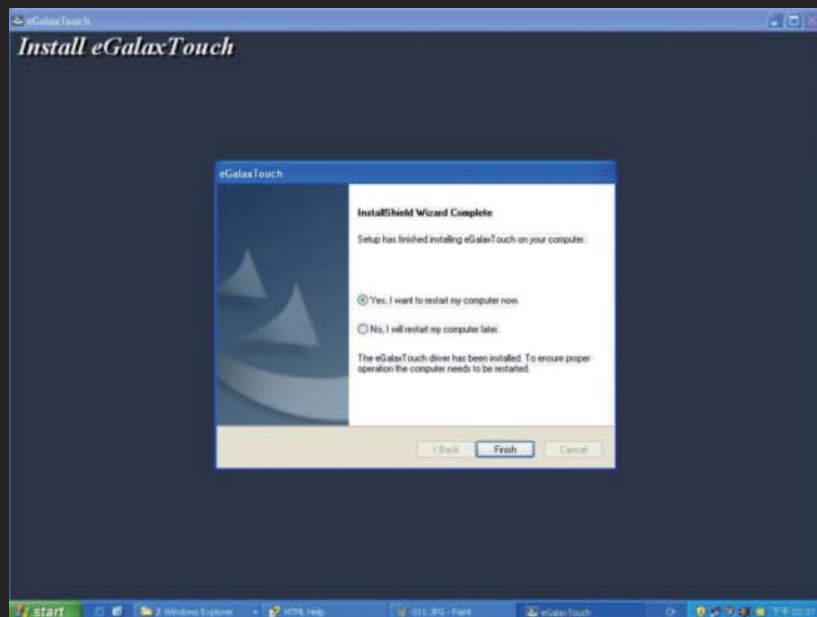


Just Press Yes or No to confirm driver installation for this new found device.

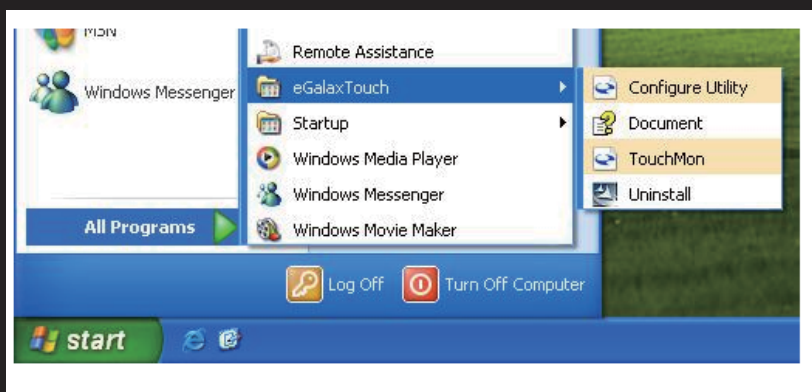




Finally, if PS2 filter driver was installed during this software installation, a reboot dialog is popped up for system reboot request to complete driver installation



After driver installation, a shortcut will be generated and shown on the desktop. And, a new file group generated for eGalaxTouch as below,



Your Touch screen is ready to use now You can click on the icon Touchkit located on your desktop to launch the Touch screen program for various settings and adjustments.



NOTE

NOTE 1:

If you are trying to connect the monitor to a laptop computer, please make sure to enable external monitor setting on your laptop. Some laptop computers have four modes: Laptop Display Only, Duplicate display Mode, Extend Display Mode, and Projector Only Mode. Please select the mode you wish to use.

NOTE 2:

Touch Screen device driver must be installed onto your computer in order for the Touch Screen to become functional. Xenarc Technologies uses Resistive Touch Screen panels in the 700TSU monitor. Touch Screen drivers and software for different operating systems can be found in the included CD-ROM disc. You can refer to this manual for a walkthrough of Touch Screen Driver installation under Microsoft Windows XP.

NOTE 3:

The maximum voltage supported by the monitor is 35V DC. Feeding the monitor with higher voltage will damage the monitor and void the warranty. Please use a fused power source if you decide to wire the monitor directly to your car's electrical system. It is also crucial that you check the polarity of the connection.

NOTE 4:

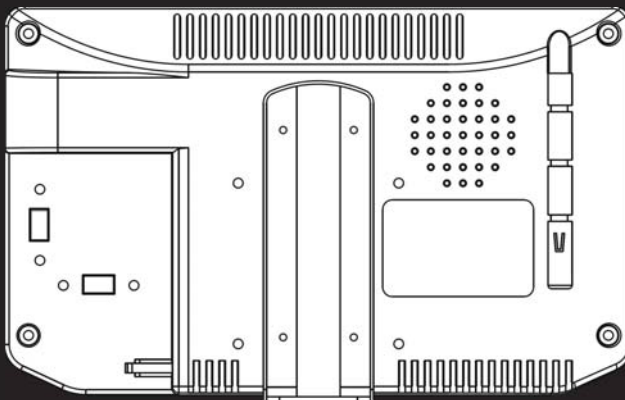
If the monitor is not displaying the VGA signal properly, the VGA signal might be out of range. Please try changing your display refresh rate to 60, 70, 72, or 75Hertz.

NOTE 5:

Please note that the LCD screen is made with high-precision technology. However, black points or bright points of light (red, blue, or green) may appear constantly on the LCD screen, and irregular colored stripes or brightness may appear on the LCD screen. This is not malfunction. (Effective dots: more than 99.999%)

For Technical Support, please contact us at:

Xenarc Technologies Corp.
Toll Free: 888-656-6536
E-mail: support@xenarc.com
Website: www.xenarc.com



The length of the mounting screw.
(common between right side and left side)

Owner's Records

The model and serial numbers are located on the rear of the unit. Please record these numbers in the spaces provided below, as well as the dealer name, address, and telephone number. Please refer to these records whenever speaking to your dealer regarding this product.

Model Number: _____

Serial Number: _____

Dealer Name: _____

Street Address: _____

City: _____

State: _____

Zip: _____

Phone Number: _____

Purchase Date: _____