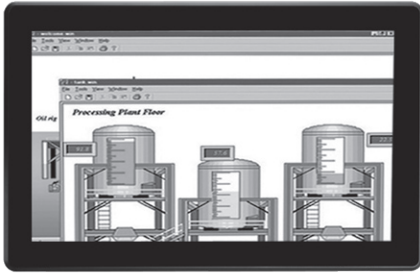


GOT3157W-832-PCT

15.6" WXGA TFT Fanless Multi Touch Panel Computer with Intel® Atom™ Processor (-10°C ~ +50°C)

NEW



- | | |
|--------------------------------------|---------------------------|
| 1. Power switch | 7. USB 2.0 x 2 |
| 2. Terminal block for DC power input | 8. Audio(Line-out) |
| 3. USB 2.0 x 2 | 9. CF slot |
| 4. COM 1 (RS-232/422/485) | 10. Backlight switch |
| 5. COM 2 (RS-232) | 11. Brightness adjustment |
| 6. Ethernet x 2 | |



Introduction

The GOT-3157W is a 15.6" WXGA fanless touch panel computer. By supporting a wide temperature range from -10°C +50°C, it can be used in any harsh environment. The unit adopts 15.6" WXGA TFT-LCD and low power consumption Intel® Atom™ processor. With the growing demand of wireless application, it provides one Mini card slot for wireless network connection. By just plugging in the Mini card WLAN card, customers have instant access wireless LAN. This model is suitable for many applications including transportation, train, control platform of ships, heavy industry, and oil pipe monitoring systems.

Wide-temperature (-10°C ~ +50°C) supported

The GOT-3157W adopts unique extended temperature technology, with a temperature range from -10°C ~ +50°C, with fanless cooling system and compact design for harsh environment.

WLAN antenna supported (optional)

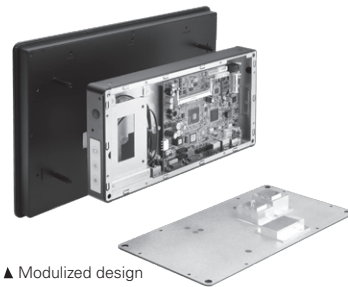
The GOT3157W provides a Mini card slot and WLAN antenna for wireless network connections. By simply plugging in the wireless LAN card, customers can use the unit in a wireless environment.

Anti-vibration up to 1.0G

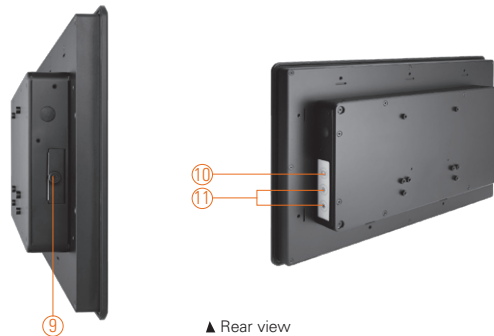
With a unique anti-vibration design patent, the GOT3157W can work well under 1.0G (10-500Hz) in operation mode and equipped with a 2.5 HDD.

Features

- 15.6" WXGA wide screen with modulized design
- Multi touch 15.6" projected capacitive
- Fanless design with Intel® Atom™ processor D2550 1.86 GHz
- Supports 2.5" SATA HDD & CompactFlash™ type II (optional)
- Supports WLAN module & antenna
- Supports 4 USB 2.0 & 2 COM ports
- IP65 front bezel
- Supports panel mount, VESA arm, desktop stand, wall mount
- Supports wide temperature range of -10°C ~ +50°C



▲ Modulized design



▲ Rear view

Specifications

Front Bezel	IP65 front bezel		
LCD Panel	Display Type	15.6" WXGA TFF LCD	
	Brightness (cd/m ²)	300 nits	
	Resolution	1366 x 768	
Main System	CPU	Intel® Atom™ processor D2550 1.86 GHz	
	Chipset	Intel® NM10	
	System Memory	1 x 204-pin DDR3 max. up to 4 GB	
	BIOS	AMI 8 Mbit with RPL/PXE LAN boot ROM	
	Storage	1 x 2.5" SATA HDD	
		1 x CompactFlash™ (optional)	
	Watchdog Timer	255 levels, 0-255 sec.	
	Onboard Graphics	Integrated Intel® GFX	

* All specifications and photos are subject to change without notice.

Specifications

I/O Connector	1 x RS-232 (COM 1) 1 x RS-232/422/485 (COM 2) 1 x Switch for power on/off (ATX) 1 x Audio (Line-out) 4 x USB 2.0 2 x 10/100/1000Mbps Ethernet 2 x speakers (optional)
Expansion Interface	1 x PCIe Mini Card
Touchscreen	Capacitive multi-touch
Power Supply	10-30VDC
Dimensions	396 mm (15.6") (W) x 53.9 mm (2.12") (D) x 247.1 mm (9.73") (H)
Packing Dimensions	TBD
Weight (net/gross)	TBD
Environment	Operating temperature: -10°C ~ +50°C (14°F ~ 122°F) Storage Temperature: -20°C ~ +60°C (-4°F ~ +140°F) Relative humidity: 10% ~ 95% @ 40°C; non-condensing Operation vibration: 2G, 5 ~ 500Hz, random for CompactFlash™
Certification	CE

* W.T.: Wide Temperature. All W.T. supported products have to be sorted by Axiomtek.

Ordering Information

GOT3157W-832-PCT	15.6" WXGA TFT fanless multi touch panel computer with Intel® Atom™ D2550
GOT3157W-832-PCT-RF	15.6" WXGA TFT fanless multi touch panel computer with Intel® Atom™ D2550 and WiFi

Optional EOS Installation

WES 7 (32-bit)

Optional OS Installation

Windows® 7 (32-bit)



▲ Side view

Dimensions

