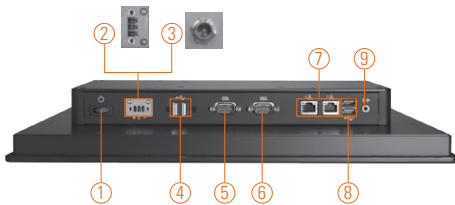
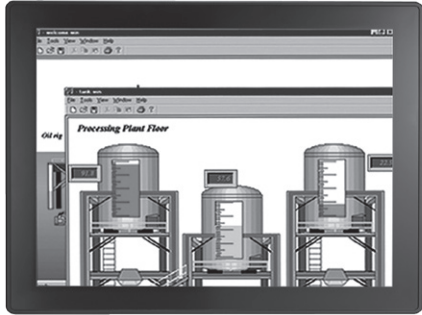


# GOT3177T-834

17" SXGA TFT Flat Front Bezel Touch Panel Computer with Intel® Bay Trail-D Celeron® Processor J1900 (-10°C ~ +50°C)

**NEW**



- |   |                           |                           |
|---|---------------------------|---------------------------|
| 1. Power switch                         | 5. COM 1 (RS-232/422/485) | 10. CFast™ slot           |
| 2. Terminal block for DC power input or | 6. COM 2 (RS-232/422/485) | 11. Backlight switch      |
| 3. Screw conn. w/ AC power adapter      | 7. Ethernet x 2           | 12. Brightness adjustment |
| 4. USB 2.0 x 2                          | 8. USB 3.0 x 2            |                           |
|   | 9. Audio (Line-out)       |                           |



## Introduction

The GOT3177T is a 17" SXGA fanless touch panel computer. By supporting a wide temperature range from -10°C ~ +50°C, it can be used in any harsh environment. The unit adopts 17" SXGA TFT-LCD and low power consumption Intel® Celeron® processor. With the growing demand of wireless application, it provides two mini card slots for wireless/3G network connection. By just plugging in the WLAN/3G mini card, customers have instant access wireless environment. This model is suitable for many applications including transportation, train, control platform of ships, heavy industry, and oil pipe monitoring systems.

### Wide-temperature (-10°C ~ +50°C) supported

The GOT3177T adopts unique extended temperature technology, with a temperature range from -10°C ~ +50°C, with fanless cooling system and compact design for harsh environment.

### WLAN and 3G antennas supported (optional)

The GOT3177T provides two Mini card slots and WLAN/3G antennas for network connections. By simply plugging in the WLAN/3G mini card, customers can use the unit in a wireless environment.

## Features

- 17" SXGA TFT with modulated design
- Supports 17" flat resistive touch
- Fanless design with Intel® Celeron® processor J1900 4C@2.0GHz
- Supports 2.5" SATA HDD & CFast™ or mSATA
- Supports WLAN/3G module & antenna (optional)
- Supports 2 Giga LAN, 2 USB 2.0, 2 USB 3.0 and 2 COM ports
- IP65 front bezel
- Supports panel mount and optional VESA arm/desktop stand/wall mount
- Supports wide temperature range of -10°C ~ +50°C



▲ Modulated design



▲ Rear view



## Specifications

|             |                                 |   |
|-------------|---------------------------------|---|
| Front Bezel | IP65 front bezel                |   |
| LCD Panel   | Display Type                    | 17" SXGA TFT LCD  |
|             | Brightness (cd/m <sup>2</sup> ) | 350 nits  |
|             | Resolution                      | 1280 x 1024   |
| Main System | CPU                             | Intel® Bay Trail-D Celeron® Processor J1900 4C@2.0GHz   |
|             | System Memory                   | 1 x 204-pin DDR3L 1333 and 1600 MT/s SO-DIMM up to 8 GB |
|             | BIOS                            | AMI UEFI BIOS   |
|             | Storage                         | 1 x 2.5" SATA HDD<br>1 x CFast™ or 1 x mSATA            |
|             | Watchdog Timer                  | 255 levels, 0 ~ 255 sec.                                |
|             | Onboard Graphics                | Integrated Intel® GFX                                   |

## Specifications

|                     |  |
|---------------------|--|
| I/O Connector       | 2 x RS-232/422/485 (default RS-232)<br>1 x Audio (Line-out)<br>2 x USB 2.0<br>2 x USB 3.0<br>2 x 10/100/1000Mbps Ethernet (Intel® i210IT)  |
| Expansion Interface | 1 x PCIe Mini Card slot (w/SIM slot, full size)<br>1 x PCIe Mini Card slot (support mSATA optional, full size)   |
| Touchscreen         | Flat resistive touch   |
| Power Supply        | 9-36VDC  |
| Dimensions          | 398.02 mm (15.64") (W) x 59.9 mm (2.36") (D) x 330.44 mm (13.01") (H)  |
| Packing Dimensions  | TBD  |
| Weight (net/gross)  | TBD  |
| Environment         | Operating temperature: -10°C ~ +50°C (+14°F ~ +122°F)<br>Storage Temperature: -20°C ~ +60°C (-4°F ~ +140°F)<br>Relative humidity: 20% ~ 90% @ 40°C; non-condensing<br>Operation vibration:<br>2 G, 10 ~ 500Hz, random for CFast™ |
| Certification       | CE   |

\* W.T.: Wide Temperature. All W.T. supported products have to be sorted by Axiomtek.

## Ordering Information

|                    |   |
|--------------------|---|
| GOT3177T-834-FR-DC | 17" SXGA TFT fanless panel computer with Intel® Celeron® J1900 and flat resistive touch, DC version (-10°C ~ +50°C) |
| GOT3177T-834-FR-J  | 17" SXGA TFT fanless panel computer with Intel® Celeron® J1900 and flat resistive touch, AC version (-10°C ~ +50°C) |

## Optional EOS Installation

WES 7 (64bit)  
WE8S

## Optional OS Installation

Windows® 8  
Windows® 7 (64bit)

Overview

Industrial Panel Computers & Monitors

Heavy-duty Fanless Touch Panel Computers

Digital Signage Solutions

Healthcare & Medical Solutions

Open Frame Panel Computers

Accessories

## Dimensions

