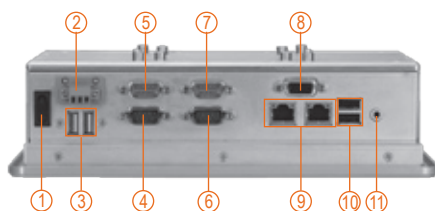


# GOT3846T-832

8.4" SVGA TFT Fanless Touch Panel Computer with  
Intel® Atom™ Processor (-20°C ~ +55°C)



- |                           |                      |
|---------------------------|----------------------|
| 1. Power switch           | 6. COM 2 (RS-232)    |
| 2. DC power input         | 7. COM 4 (RS-232)    |
| 3. USB 2.0 x 2            | 8. VGA               |
| 4. COM 1 (RS-232)         | 9. Ethernet x 2      |
| 5. COM 3 (RS-232/422/485) | 10. USB 2.0 x 2      |
|                           | 11. Audio (Line-out) |

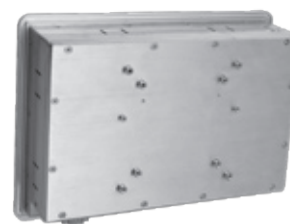
## Features



- 8.4" SVGA (800 x 600) color TFT LCD display
- Intel® Atom™ processor N2600 1.6 GHz
- Supports wide temperature range of -20°C ~ +55°C
- Aluminum front bezel & chassis
- Supports WLAN module & external antenna
- Supports 4 USB 2.0 & 4 COM ports
- Supports panel mount, wall mount, VESA arm, desktop stand



Side view



Rear view

## Introduction

The GOT3846T-832 is the 8.4" fanless touch panel computer. By supporting a wide temperature range from -20°C to +55°C, the GOT-3106TL is especially designed for harsh environments. The GOT3846T-832 adopts a modern, super sleek fanless design, is equipped with a 8.4" TFT LCD, and low power consumption Intel® processor. In response to customer's requests for wireless applications, the GOT3846T-832 has a Mini card slot and an optional fixed rotational WLAN antenna for wireless network connection. By just plugging in the Mini card WLAN card, customers have instant access wireless LAN. The GOT3846T-832 is used extensively for variety of industry needs including transportation, packing field surveillance, building automation, and more.

### Wide-temperature (-20°C ~ +55°C) supported

The GOT3846T-832 adopts unique extended temperature technology, with a

temperature range from -20°C to +55°C, with a fanless cooling system and compact design for harsh environments.

### WLAN antenna supported (optional)

The GOT3846T-832 provides a Mini card slot and an optional fixed rotational WLAN antenna for wireless network connections. By simply plugging in the wireless LAN card, customers can use the unit in a wireless environment.

### Anti-vibration up to 1.3G

With a special vibration-resistant design patent, GOT3846T-832 can work well under 1.3G (10-500Hz) in operation mode, and equipped with a 2.5" HDD.

## Specifications

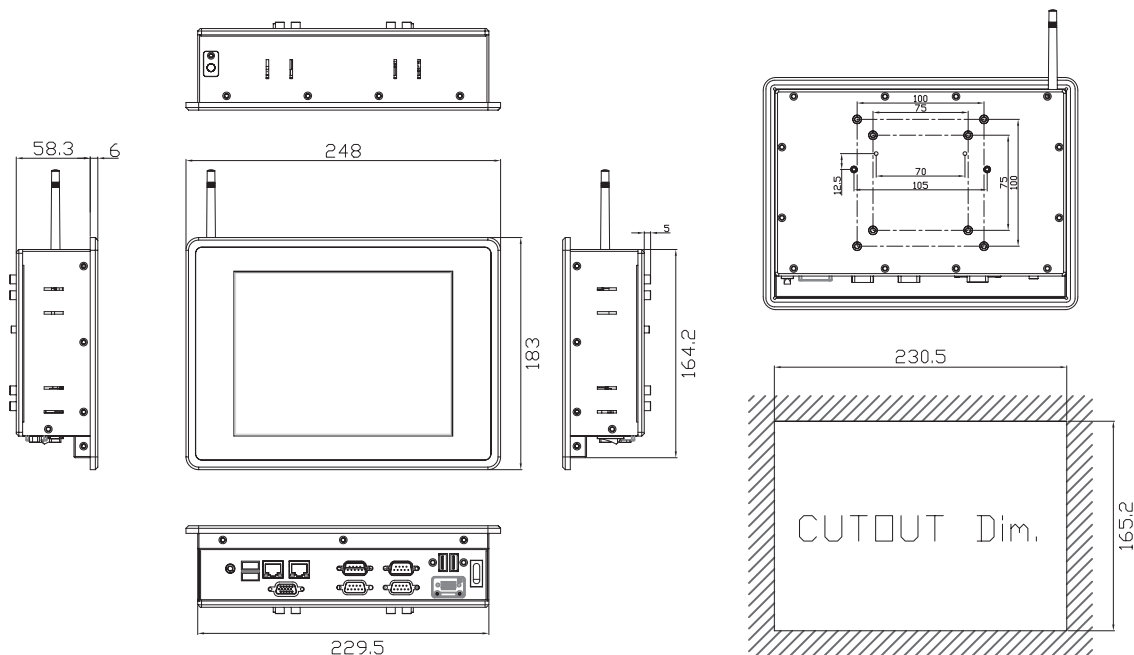
Front Bezel	IP65, NEMA 4 rugged protection, aluminum front bezel	
LCD Panel	Display Type	8.4" SVGA TFT LCD
	Brightness (cd/m <sup>2</sup> )	450 nits
	Resolution	800 x 600
	View Angle (H/V)	160° / 140°

Main System	CPU	Intel® Atom™ processor N2600 1.6 GHz
	Chipset	Intel® NM10 Express
	System Memory	1 x 204-pin DDR3 800 SO-DIMM max. up to 2 GB

BIOS	AMI 8 Mbit with RPL/PXE LAN boot Rom
Storage	1 x 2.5" SATA HDD 1 x CompactFlash™
Watchdog Timer	255 levels, 0-255 sec.
Onboard Graphics	Integrated Intel® GFX
I/O Connector	3 x RS-232 (COM 2/3/4) 1 x RS-232/422/485 (COM 1) 1 x VGA 1 x Audio (Line-out) 4 x USB 2.0 2 x 10/100/1000Mbps Ethernet
Expansion Interface	1 x PCIe Mini Card
Touchscreen	Resistive type
Power Supply	10-30V <sub>DC</sub> (phoenix type)
Dimensions	248 mm (9.76") x 58.3 mm (2.29") x 183 mm (7.2")
Packing Dimensions	TBD
Weight (net/gross)	TBD
Environment	Operating temperature: -20°C - +55°C (-4° - 131°F) (with W.T. DRAM/HDD/CF) Relative humidity: 10% - 95% @ 40°C; non-condensing Operation vibration: 1.3G, 10-500Hz, random for 2.5" HDD 3G, 10-500Hz, random for CompactFlash™
Certification	CE

\* W.T.: Wide Temperature. All W.T. supported products have to be sorted by Axiomtek.

## Dimensions



## Ordering Information

GOT3846T-832 8.4" SVGA TFT fanless touch panel computer with Intel® Atom™ N2600 (-20°C - +55°C)

\* Specification and certifications are based on options and may vary.

## Optional EOS Installation

Windows® Embedded Standard

Windows® Embedded Standard 7

Linux kernel 2.6

## Optional OS Installation

Windows® 7

Overview

Industrial Panel Computers & Monitors

Heavy-duty Fanless Touch Panel Computers

Digital Signage Solutions

Healthcare & Medical Solutions

Open Frame Panel Computers

Accessories